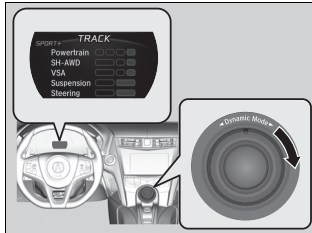


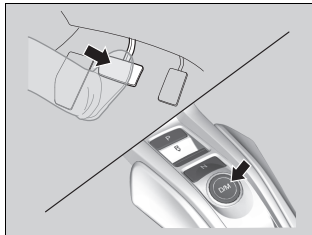
Launch Control

Your vehicle controls the engine and transmission response to maximize acceleration from standstill.

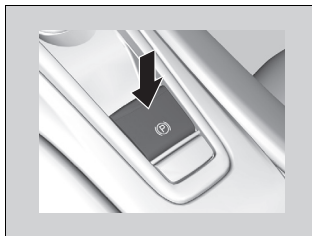


1. Use the Integrated Dynamics System mode switch to set the Integrated Dynamics System mode to **TRACK**.

▶ **Integrated Dynamics System P. 340**



2. Depress the brake pedal firmly and change the gear position to **D/M**.



3. Release the parking brake.

Launch Control

⚠ WARNING

Using this system on public roads that are used by other vehicles and pedestrians can result in a collision involving serious injury or death.

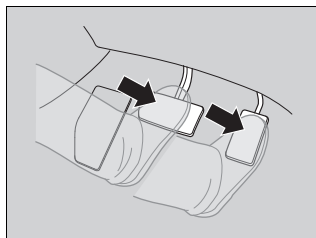
Do not use this system when driving on wet or slippery surfaces as you may lose control of the vehicle.

The system puts a tremendous load on the engine and transmission. Frequent use of this system may lead to reduced vehicle life.

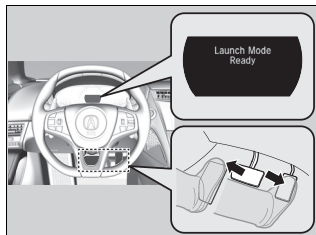
The system does not function when:

- VSA® is off.
- The vehicle is not at standstill.
- The gear position is not in **D/M**.
- A gear other than 1st gear is selected when the system is in manual mode.
- The parking brake is applied.
- The vehicle is facing uphill or downhill on a steep slope.
- The transmission temperature is too cold or too hot.
- There is a problem with a vehicle system.

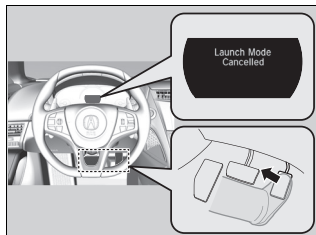
Continued



4. While keeping the brake pedal firmly depressed, depress the accelerator pedal all the way, beyond the point when the transmission downshifts.



5. When **Launch Mode Ready** is displayed in the driver information interface, release the brake pedal at once.



6. To cancel launch mode, take your foot off the accelerator pedal. **Launch Mode Cancelled** is displayed in the driver information interface.