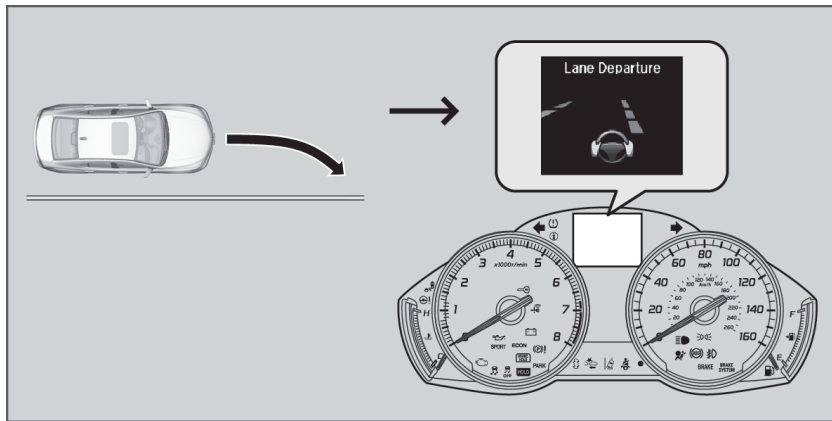


Road Departure Mitigation (RDM)

Alerts and helps to assist you if the system determines a possibility of your vehicle unintentionally crossing over detected lane markings and/or leaving the roadway altogether while driving between 45-89 mph (72-144km/h).

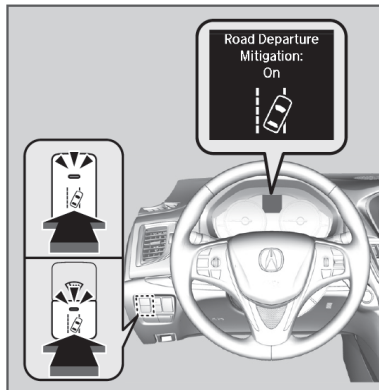


If you get too close to a detected lane line without using your turn signal, a message appears in the MID.

Steering wheel torque and vibrations are applied to help your vehicle stay in the lane. Braking may also be applied if the lane lines are solid and continuous.

■ Turning the System On or Off

Press the RDM button to turn the system on or off. A green indicator appears on the button when the system is on.



■ Changing Settings

Determine the warning timing, or turn the system off. Use the interface dial to make selections.

1. From the Home screen, press the **SETTINGS** button.
2. Select Vehicle Settings. The vehicle must be in Park (P).
3. Select Driver Assist.
4. Select Road Departure Mitigation Setting.

■ Important Safety Reminder

The RDM system has limitations. Over-reliance on it may result in a collision. It is always your responsibility to keep your vehicle within the driving lane.

The RDM system only alerts you when lane drift is detected without a turn signal in use. The RDM system may not detect all lane marking or lane or roadway departures; accuracy will vary based on weather, speed, and lane marker condition. It is always your responsibility to safely operate the vehicle and avoid collisions.