

# NAVIGATION

Learn how to enter a destination and operate the navigation system\*1.

## Basic Navigation Operation

A real-time navigation uses GPS and a map database to show your current location and help guide you to a desired destination. You can operate the system using voice commands or the system controls.

**To reduce the potential of driver distraction, certain manual functions may be inoperable or grayed out while the vehicle is moving. Voice commands are always available.**

### ■ Steering Wheel Controls

Use the steering wheel controls to give voice commands.

**Hang-Up/Back button:** Press to cancel a command or operation.

**Talk button:** Press to say navigation commands from the Voice Portal screen.



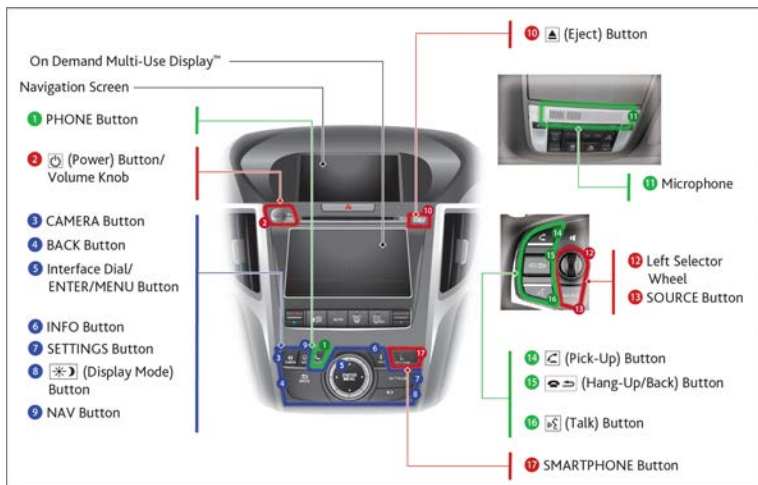
### ■ System Guidance Volume

1. Press SETTINGS.
2. Select System Settings.
3. Select Feedback.
4. Adjust the volume to your preferred level.

### ■ Navigation Display and Controls

Touch icons on the screen to enter information and make selections.

\*1 - If equipped



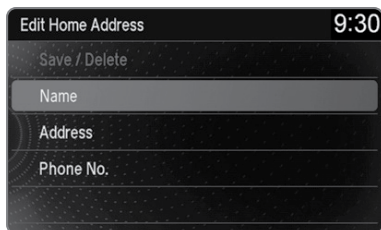
## Entering Your Destination

There are several methods to enter a destination.

### ■ Home Address

Store your home address in the system so you can easily route to it.

1. Press the SETTINGS button.
2. Select Navigation Settings.
3. Select Edit Go Home.
4. Select Address, then select Address again.
5. Enter Address, select Save.



### ■ Street Address

Enter a street address using voice commands (U.S. models only). Press the Talk button to enter the Voice Portal screen.

You can also enter the address manually when the vehicle is stopped. While on the map screen, press the MENU button and use the interface dial to select Address. Follow the prompts.

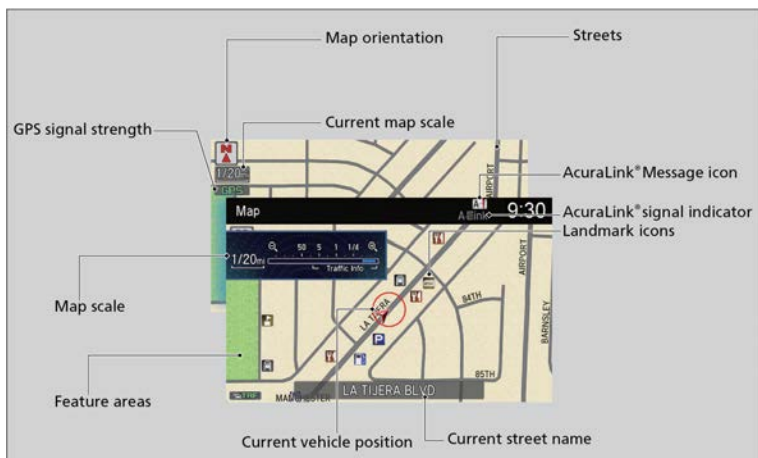
1. From the Voice Portal screen, say *"Navigation"* and then *"Address."*
2. The system prompts you to say the entire address. For example, say *"1-2-3-4 Main Street, Los Angeles, California."*
3. The system interprets the address by state, city, street, and address number. If necessary, you may have to clarify similar matches.
4. Say *"Set as destination"* to set the route.



## Routing

After a destination is set, you can alter or cancel your route.

### ■ Map Legend



### **⚠ WARNING**

Using the navigation system while driving can take your attention away from the road, causing a crash in which you could be seriously injured or killed.

Operate system controls only when the conditions permit you to safely do so.

### ■ AcuraLink Real Time Traffic™\*13\*16

View traffic flow, incidents, and construction in major metro areas. You can also route around congestion or incidents when you have a destination set. Use the interface dial to make and enter selections.

1. From the map screen, press the interface dial. Select Map/Route. Select Traffic Incidents.
2. A list of incidents on your route appears. Select the incident you want to avoid.
3. Select Avoid. Repeat as necessary to select other incidents.
4. Select Recalculate Route.



\*13 - US models only, if equipped

\*16 - Requires an AcuraLink® subscription