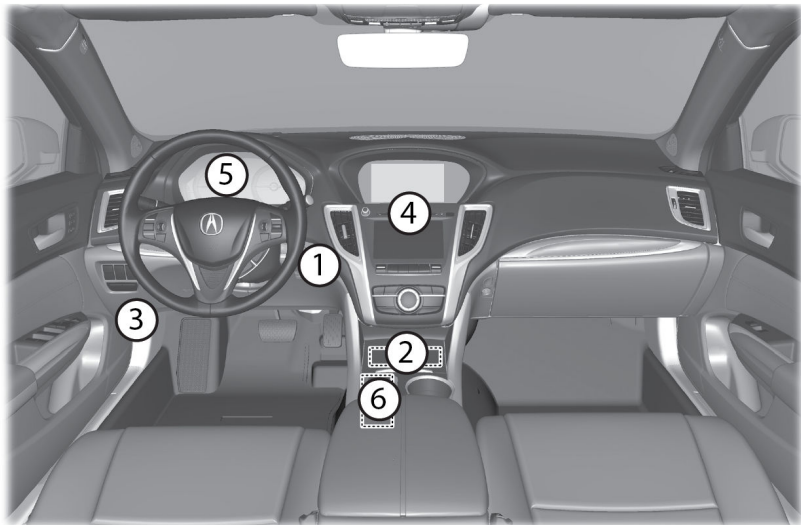


Dashboard and Nearby Controls

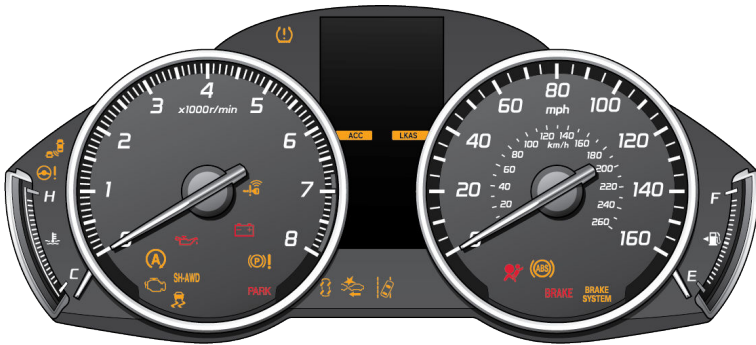


1. ENGINE START/STOP Button
2. USB Port
3. Hood Release Handle

4. Hazard Warning Button
5. Multi-Information Display
6. Parking Brake

INSTRUMENT PANEL

Indicators, gauges, and displays related to driving the vehicle.



Indicators briefly appear with each engine start and then go out. Red and amber indicators are most critical. Blue and green indicators are used for general information.

Malfunction Indicators

These are the most critical indicators. If they come on and stay lit while driving or at any other time, there may be a problem. See your dealer for assistance.

BRAKE
U.S.



Canada

Brake system (red)

- Brake fluid is low.
 - There is a malfunction in the brake system.
- Press the brake pedal lightly to check pedal pressure. If normal, check the brake fluid level when you stop. If abnormal, take immediate action. If necessary, downshift the transmission to slow the vehicle using engine braking. Have your vehicle repaired immediately.

BRAKE SYSTEM
U.S.



Canada

Brake system (amber)

- Comes on for a few seconds when you set the power mode to ON, then goes off.
- Comes on if there is a problem with a system related to braking other than the conventional brake system.
- Comes on if there is a problem with the automatic brake hold system.

Have your vehicle checked by a dealer. With this indicator on, your vehicle still has normal braking ability.

**Low oil pressure**

Engine oil pressure is low. Stop in a safe place. Open the hood, check the oil level and add oil if necessary. If the indicator does not turn off, have your vehicle repaired immediately.

**12-Volt Battery Charging system**

The 12-volt battery is not charging. Turn all electrical items off, but do not turn the vehicle off to prevent further battery discharge. Have your vehicle repaired immediately.

**Supplemental Restraint System (SRS)**

Comes on if a problem with any of the following is detected:

- Supplemental restraint system
- Side airbag system
- Side curtain airbag system
- Driver's knee airbag

Have your vehicle checked by a dealer.

**Keyless Access System**

There is a problem with the system. Have your vehicle checked by a dealer.

**Lane Keeping Assist System (LKAS)**

There is a problem with the system. Have your vehicle checked by a dealer.

**Malfunction Indication Lamp (check engine light)**

The emissions control system may have a problem. If the indicator blinks, a misfire in the engine's cylinders is detected. Stop in a safe place where there are no flammable objects. Stop the engine for 10 minutes or more, and wait for it to cool down. Then, take the vehicle to a dealer.

**Anti-lock Brake System (ABS)**

There is a problem with the anti-lock brake system. Your vehicle still has normal braking ability, but no anti-lock function.

**Low Tire Pressure / Tire Pressure Monitoring System (TPMS)**

- Blinks and then remains on:

Have your vehicle checked by a dealer. If the vehicle is fitted with a compact spare^{*1}, get your regular tire repaired or replaced and put back on your vehicle as soon as you can.



Vehicle Stability Assist[®] (VSA[®]) System

There is a problem with the VSA[®] or hill start assist system. Have your vehicle checked by a dealer.



Collision Mitigation Braking System[™] (CMBS[™])

There is a problem with the system, the temperature inside the camera is too high, the camera or sensor is blocked, or the system is manually deactivated.



Road Departure Mitigation (RDM)

There is a problem with the system, the temperature inside the camera is too high, or the camera is blocked.



Blind Spot Information^{*1}

There is a problem with the system, or the sensor is blocked.



Electric Power Steering (EPS) System

There is a problem with the system. Have your vehicle checked by a dealer.



Adaptive Cruise Control (ACC) with Low Speed Follow

There is a problem with the system. Clean any dirt or snow that may be covering the radar sensor. Have your vehicle checked by the dealer if the indicator remains on.



Auto Idle Stop^{*1}

- Blinks if there is a problem with the Auto Idle Stop system. Have your vehicle checked by a dealer.
- Comes on when the Auto Idle Stop system has been turned off by the Auto Idle Stop system OFF button.



Electric Parking Brake System

There is a problem with the system. Have your vehicle checked by a dealer.



Transmission System Indicator

The indicated current gear selection or all the gear positions blink if there is a problem with the transmission system or the transmission and it is not possible to select P (Park).

Condition Indicators

These indicators may require you to perform an action.

PARK
U.S.



Canada

Electric Parking Brake

Release the parking brake before driving. You will hear a beep if you drive with it not fully released.



Seat Belt Reminder

Make sure seat belts are fastened for you and all passengers. The indicator blinks and beeps sound continuously if you or your front passenger has not fastened your seat belts when you begin driving. If the indicator remains on after seat belts are fastened, see your dealer.



Low Fuel

Refuel as soon as possible. If the indicator blinks, there is a problem with the fuel gauge. See your dealer.



Low Tire Pressure / Tire Pressure Monitoring System (TPMS)

- Comes on while driving:
Stop in a safe place, check tire pressures, and inflate tire(s) if necessary.



System Message

When a condition or malfunction indicator comes on, a message also appears on the multi-information display (MID). Check the display for more information.



Immobilizer

Your key or remote transmitter cannot be recognized by the vehicle.

- **Blinks** - You cannot start the engine. Set the power mode to VEHICLE OFF (LOCK), then select the ON mode again.
- **Repeatedly Blinks** - The system may be malfunctioning. Have your vehicle checked by a dealer.

On/Off Indicators

These indicators remind you when an item is on or off.



VSA® off



VSA® engaged (blinks)



RDM off



LKAS on



ACC with Low Speed
Follow on



Turn signals/hazards on



Fog lights*1 on



High beams on



Exterior lights on



Auto High Beam System on



Automatic brake hold on



Automatic brake activated

U.S.



Auto Idle Stop*1 on

Canada



Auto Idle Stop*1 off

*1 - If equipped