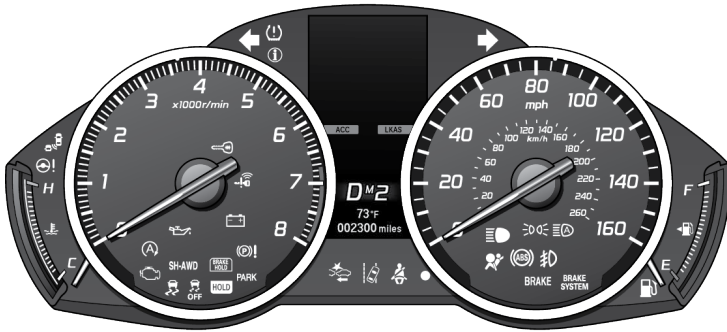


INSTRUMENT PANEL

Indicators, gauges, and displays related to driving the vehicle.



Indicators briefly appear with each engine start and then go out. Red and amber indicators are most critical. Blue and green indicators are used for general information.

Malfunction Indicators

These are the most critical indicators. If they come on and stay lit while driving or at any other time, there may be a problem. See your dealer for assistance.

BRAKE
U.S.

Brake system (red)

- Comes on when the brake fluid is low.
- Comes on if there is a problem with the brake system.
- **Comes on while driving** - Make sure the parking brake is released. Check the brake fluid level.
- **Comes on along with the ABS indicator** - Have your vehicle checked by a dealer.


Canada

**BRAKE
SYSTEM**
U.S.

Brake system (amber)

- Comes on for a few seconds when you set the power mode to ON, then goes off.
- Comes on if there is a problem with a system related to braking other than the conventional brake system.
- Comes on if there is a problem with the automatic brake hold system


Canada

Have your vehicle checked by a dealer. With this indicator on, your vehicle still has normal braking ability.



Low oil pressure

Engine oil pressure is low.

- **Comes on while driving** - Immediately stop in a safe place.



Charging system

Comes on when the battery is not charging.



Supplemental Restraint System (SRS)

Comes on for a few seconds when you set the power mode to ON, then goes off.

Comes on if a problem with any of the following is detected:

- Supplemental restraint system
- Side airbag system
- Side curtain airbag system
- Driver's knee airbag

Have your vehicle checked by a dealer.



Keyless Access System

There is a problem with the system. Have your vehicle checked by a dealer.

LKAS

Lane Keeping Assist System (LKAS)

There is a problem with the system.

Stays on constantly or does not come on at all - Have your vehicle checked by a dealer.



Malfunction Indication Lamp (check engine light)

- Comes on when you turn the power mode ON, and goes off when the engine starts If "readiness codes" have not been set, it blinks five times before it goes off.
- Comes on if there is a problem with the emissions control system.
- Blinks when a misfire in the engine's cylinders is detected.
- Readiness codes are part of the on board diagnostics for the emissions control systems.
- **Comes on while driving** - Have your vehicle checked by a dealer.
- **Blinks while driving** - Stop in a safe place where there are no flammable objects. Stop the engine for 10 minutes or more, and wait for it to cool down. Then, take your vehicle to a dealer.



Anti-lock Brake System (ABS)

There is a problem with the anti-lock brake system. Your vehicle still has normal braking ability, but no anti-lock function. Have your vehicle checked by a dealer.



Low Tire Pressure / Tire Pressure Monitoring System (TPMS)

Comes on and stays on when:

- Comes on if the tire pressure of any of the tires becomes significantly low.
- **Comes on while driving** - Stop in a safe place, check tire pressures, and inflate the tires(s) if necessary.
- **Blinks and then remains on:** Have your vehicle checked by a dealer. If the vehicle is fitted with a spare^{*1}, get your regular tire repaired or replaced and put back on your vehicle as soon as you can.
- **Comes on while driving** - Stop in a safe place, check tire pressures, and inflate the tires(s) if necessary.



Vehicle Stability Assist[®] (VSA[®]) System

Comes on if there is a problem with the VSA[®], brake assist system, or hill start assist system.

- **Stays on constantly** - Have your vehicle checked by a dealer.



Collision Mitigation Braking System[™] (CMBS[™])

Comes on when there is a problem with the CMBS[™] system.

- **Stays on constantly without the CMBS[™] off** - Have your vehicle checked by a dealer.
- Comes on if the CMBS[™] is deactivated. A multi-information display message appears for five seconds.
- Comes on when the CMBS[™] system shuts itself off.
- **Stays on** - The area around the camera is blocked by dirt, mud, etc. Stop your vehicle in a safe place, and wipe it off with a soft cloth.
- When the radar sensor gets dirty, stop your vehicle in a safe place, and wipe off dirt using a soft cloth.
- **Stays on** - The temperature inside the camera is too high. Use the climate control system to cool down the camera. The system activates when the temperature inside the camera cools down.

^{*1} - If equipped



Road Departure Mitigation (RDM)

- Comes on if there is a problem with the RDM system.
- **Stays on constantly** - Have your vehicle checked by a dealer.
- Comes on when the RDM system shuts itself off.
- The area around the radar sensor is blocked by dirt, mud, etc. Stop your vehicle in a safe place, and wipe it off with a soft cloth.
- Have your vehicle checked by a dealer if the indicator does not go off even after you cleaned the radar sensor area around the camera.
- **Stays on** - The temperature inside the camera is too high. Use the climate control system to cool down the camera. The system activates when the temperature inside the camera cools down.



Blind Spot Information *1

- Stays on while blind spot information system is turned off.
- Comes on when mud, snow, or ice accumulates in the vicinity of sensor.
- **Comes on while driving** - Remove the obstacle in the vicinity of the sensor.
- Comes on if there is a problem with the system.
- **Comes on while driving** - Have your vehicle checked by a dealer.



Speed-sensitive Electric Power Steering (EPS) System

There is a problem with the system.

Stays on constantly or does not come on at all - Have your vehicle checked by a dealer.



Adaptive Cruise Control (ACC) with Low Speed Follow

There is a problem with the system.

- Comes on for a few seconds when you set the power mode to ON, then goes off.
- **Comes on while driving** - Have your vehicle checked by a dealer.



Auto Idle Stop

- Blinks if there is a problem with the Auto Idle Stop system. Have your vehicle checked by a dealer.
- Comes on when the Auto Idle Stop system has been turned off by the Auto Idle Stop system OFF button.



Electric Parking Brake System

- Comes on when the parking brake is applied, and goes off when it is released.
- Comes on for about 15 seconds then goes off when you push the electric parking brake switch with the power mode in OFF.
- Comes on for about 15 seconds then goes off when you set the power mode to OFF with the parking brake applied.
- **Blinks and the electric parking brake system indicator comes on at the same time** - There is a problem with the electric parking brake system. The parking brake may not be set.



Transmission System Indicator

The indicated current gear selection or all the gear positions blink if there is a problem with the transmission system or the transmission and it is not possible to select P (Park).



Super-Handling All-Wheel Drive™ (SH-AWD®)*1

- There is a problem with the SH-AWD® system.
- Blinks when the differential temperature is too high.
- **Stays on constantly** - The engine drives the front wheels only in this state. Have your vehicle checked by a dealer.
- **Blinks while driving** - Stop in a safe place, put the transmission into (P), and idle the engine until the indicator goes off. If the indicator does not stop blinking, take your vehicle to a dealer.

**1 - If equipped*

Condition Indicators

These indicators may require you to perform an action.

PARK
U.S.



Canada

Electric Parking Brake

Release the parking brake before driving. You will hear a beep if you drive with it not fully released.



Seat Belt Reminder

The indicator blinks and beeps sound continuously if you or your front passenger has not fastened your seat belts when you begin driving. If the indicator remains on after seat belts are fastened, see your dealer.



Low Fuel

Refuel as soon as possible. If the indicator blinks, there is a problem with the fuel gauge. See your dealer.

- Comes on when the fuel reserve is running low (approximately 2.5 U.S. gal/9.5 Liter left).
- Blinks if there is a problem with the fuel gauge.



Low Tire Pressure / Tire Pressure Monitoring System (TPMS)

Comes on if the tire pressure of any of the tires becomes significantly low.

- **Comes on while driving:** Stop in a safe place, check tire pressures, and inflate tire(s) if necessary.



System Message

Comes on along with a beep when a problem is detected. A system message on the multi-information display (MID) appears at the same time. Check the display for more information.



Immobilizer

Your key or remote transmitter cannot be recognized by the vehicle.

- **Blinks** - You cannot start the engine. Set the power mode to VEHICLE OFF (LOCK), then select the ON mode again.
- **Repeatedly Blinks** - The system may be malfunctioning. Have your vehicle checked by a dealer.
- Do not attempt to alter this system or add other devices to it. Electrical problems can occur.

On/Off Indicators

These indicators remind you when an item is on or off.



VSA[®] off



VSA[®] engaged (blinks)



LKAS on



ACC with Low Speed
Follow on



Turn signals/hazards on



Fog lights*¹ on



High beams on



Exterior lights on



Auto High Beam System on



Automatic brake hold on



Automatic brake activated



Auto Idle Stop on



Auto Idle Stop off

*1 - If equipped