

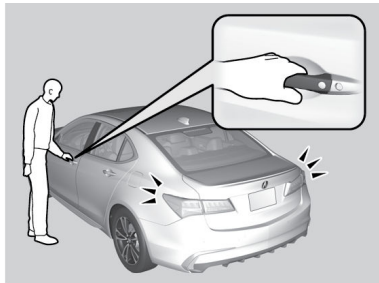
Keyless Access System

When you carry the remote transmitter (for example, in a pocket or purse) and it is outside the vehicle and within range (about 32 inches or 80 cm), you can lock or unlock the doors, and the tailgate without handling the transmitter.

■ Unlocking/Locking the Doors

To unlock: Grab the driver's door handle to unlock the driver's door. Grab the front passenger's door handle or rear ^{*1} door handle to unlock all the doors and the trunk. You can customize this feature's behavior.

To lock: Press the door lock button on either front door (or rear door ^{*1}) handle when the vehicle is off. If the remote transmitter is inside the vehicle, the doors will not lock.



**1 - If equipped*



■ Walk Away Auto Lock

When you walk away from the vehicle while carrying the remote transmitter, the doors trunk can automatically lock if the following conditions are met:

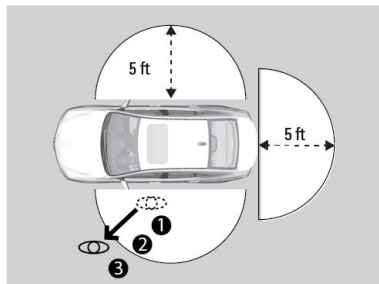
- The remote transmitter is within a range of 5 feet (1.5 m).
- All doors and the trunk are closed.
- There is not an additional remote transmitter inside the vehicle.

Follow these steps:

1. Exit the vehicle, close the door and stay near it. Listen for a beep. The system is activated.
2. Walk at least 5 feet (1.5 m) away.
3. Listen for a beep and look for the lights to flash. The doors lock.

To turn on this feature, follow the steps below:

1. From the HOME screen, select Settings.
2. Select SYSTEM.
3. Select Vehicle.
4. Select Keyless Access Setup.
5. Select Walk Away Auto Lock.
6. Select Enable.



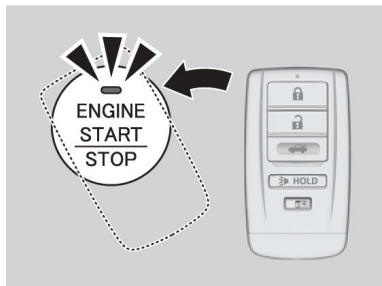
HANDLING THE UNEXPECTED

Learn about what to do in critical or emergency situations.

Keyless Access System Battery Strength

If the battery life in your remote transmitter is weak, a message appears in the Multi-Information Display (MID) with information on how to start the engine.

1. Touch the back of the remote transmitter to the ENGINE START/STOP button while the indicator is flashing.
2. With the brake pedal or clutch pedal pressed, press the ENGINE START/STOP button within 10 seconds.



When you carry the remote transmitter (for example, in a pocket or purse) and it is outside the vehicle and within range (about 32 inches or 80 cm), you can lock or unlock the doors and the tailgate without handling the transmitter.