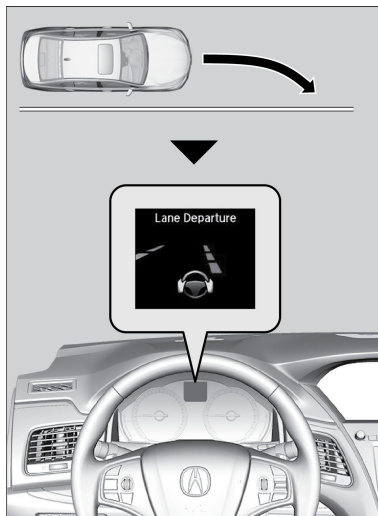


Road Departure Mitigation (RDM)

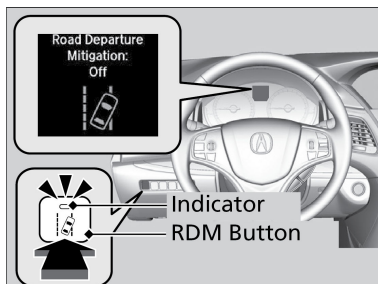
Alerts and helps to assist you if the system determines a possibility of your vehicle unintentionally crossing over detected lane markings and/or leaving the roadway altogether. while driving between 45-90 mph (72-145km/h).

If your vehicle is getting too close to detected lane markings without a turn signal activated, the system, in addition to a visual alert, applies steering torque and alerts you with rapid vibrations on the steering wheel, to help you remain within the detected lane. Braking is applied only when the lane markings are solid continuous lines.



■ Turning the System On or Off

Press the RDM button to turn the system on or off. A green indicator appears on the button when the system is on.



■ Changing Settings

Determine the warning timing, or turn the system off. Use the interface dial to make selections.

1. Press the SETTINGS button.
2. Select Vehicle Settings. The vehicle must be in Park (P).

3. Select Road Departure Mitigation Setting.
4. Select from the options.

Normal (default): Steering control starts from inside the lane edge.

Wide: Steering control starts from outside the lane edge.

Warning Only: The system only provides a BRAKE message, but does not apply steering or braking.

5. Press the BACK button to exit the menu.

■ Important Safety Reminder

The RDM system has limitations. Over-reliance on it may result in a collision. It is always your responsibility to keep your vehicle within the driving lane.