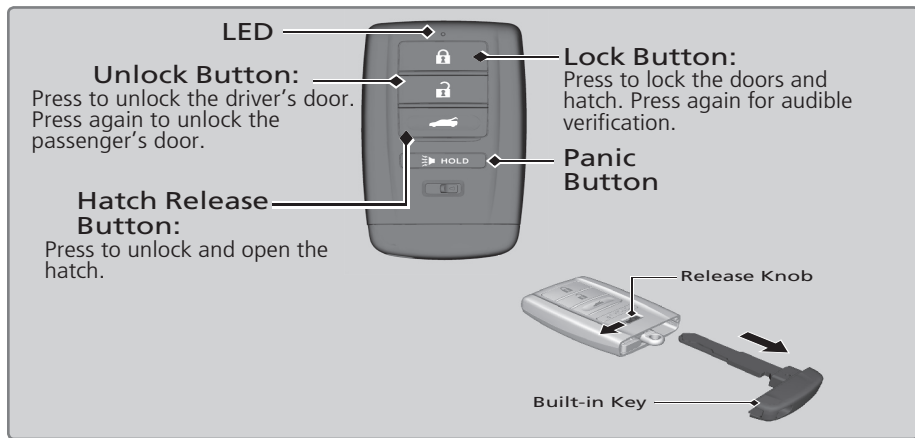


VEHICLE CONTROLS

Learn about the various controls necessary for operating and driving the vehicle.

Using the Remote Transmitter

Lock or unlock the doors and hatch.



NOTICE

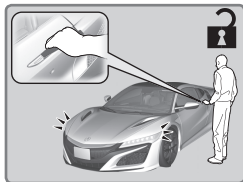
Leaving the keyless access remote in the vehicle can result in theft or accidental movement of the vehicle. Always take the key with you whenever you leave the vehicle unattended.

Keyless Access System

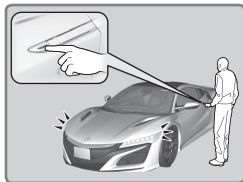
When you carry the remote transmitter (for example, in a pocket or purse) and it is outside the vehicle and within range (about 32 inches or 80 cm), you can lock or unlock the doors and hatch without handling the transmitter. The outer handles automatically pop in/out within approximately a 6 feet (2 m) radius of the outside door handle.

■ Unlocking/Locking the Doors

To unlock: The door handle will pop out if both doors are closed. If the handle fails to pop out, push on its front side.

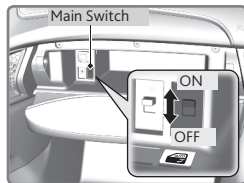


To lock: Press the door lock button on either door handle when the vehicle is off. If the remote transmitter is inside the vehicle, the doors will not lock.



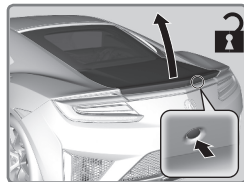
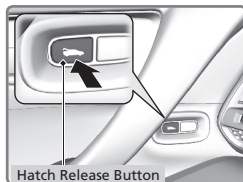
■ Auto Pop-Out Main Switch

To disable the auto pop-out function: Use the switch in the glove compartment.



■ Unlocking and Opening the Hatch

To unlock: Press the hatch release button on the vehicle or on the keyless remote.



HANDLING THE UNEXPECTED

Learn about what to do in critical or emergency situations.

Keyless Access Remote Battery Strength

If the battery life in your keyless access remote is weak, a message appears in the driver information interface with information on how to start the engine.

Touch the back of the keyless access remote to the ENGINE START/STOP button while the indicator is flashing.

With the brake pedal pressed, press the ENGINE START/STOP button within 10 seconds.

