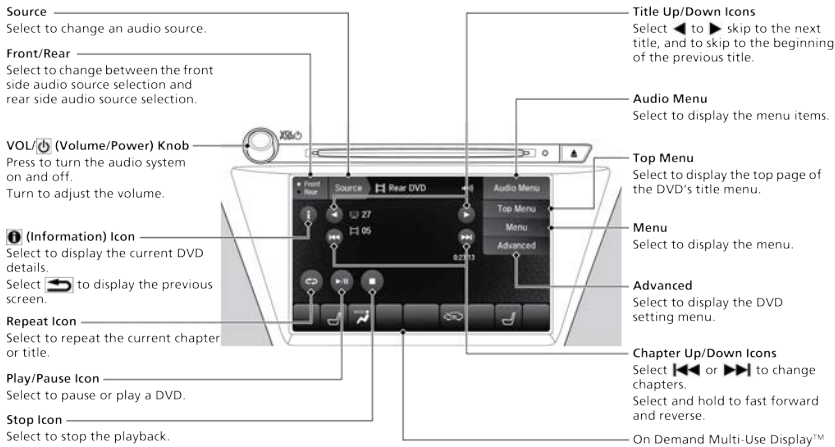


Rear Entertainment System (RES)^{*1}

Rear passengers can enjoy a different audio or entertainment source than front passengers, including movies, games, and other audio choices.

**1 - If equipped*



■ Operating the System from the Front

Operate the Rear Entertainment System (RES) from the On Demand Multi-Use Display™.

1. Press the REAR Power button on the front control panel.
2. Select Front/Rear to switch Rear mode.
3. Select Source.

The rear source is displayed on the On Demand Multi-Use Display™.

4. Select the audio source on the On Demand Multi-Use Display™.

The rear source is heard from the front speakers.

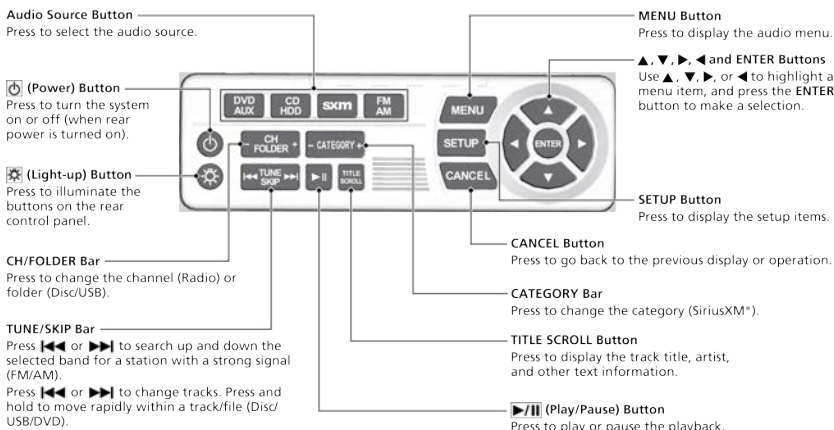
5. Select a station, channel, track, or chapter in the same way as the front audio system.



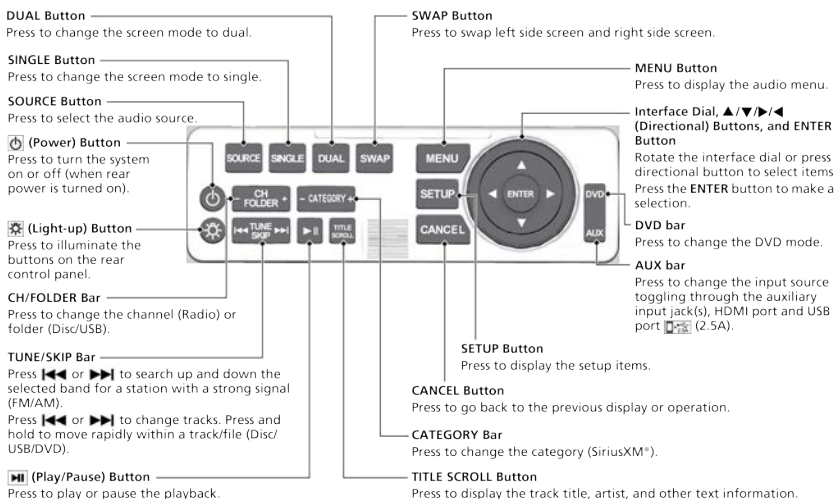
■ Operating the System from the Rear

1. Press the REAR POWER button in the front.
2. Press the audio source button on the rear control panel.
3. Select the desired source button (DVD, iPod®, USB flash drive, HDMI etc.).

Models with RES



Models with ultrawide RES



■ Playing a Disc

Insert a DVD or Blu-ray™ into the disc slot to begin automatic playback. Use the front or rear controls to operate disc playback.

The system also supports audio CDs, CD-Rs, and CD-RWs in MP3, WMA, or ACC formats. Insert a CD to begin automatic playback.

NOTICE

Do not use discs with adhesive labels or insert a damaged disc. Inserting these types of discs may cause them to get stuck or damage the audio unit.

■ HDMI™ Port

There is an HDMI port on the back of the front console compartment. The system will accept HDMI input from video games and video equipment which are equipped with an HDMI port.

Models with ultrawide RES

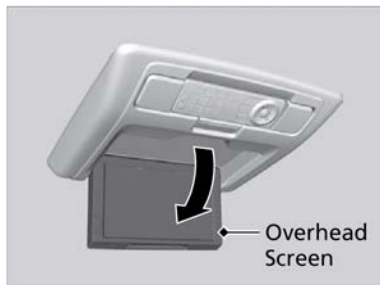
Open the outlet cover and insert the cable.



■ Overhead Screen

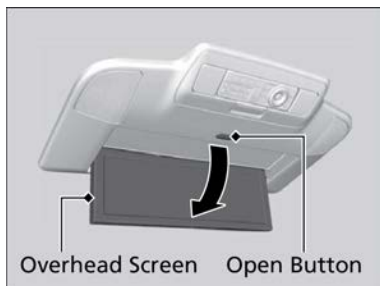
Models with RES

Pull down the screen to the first or second detent until it latches.



Models with ultrawide RES

Press the open button to open and pull down the screen.



NOTICE

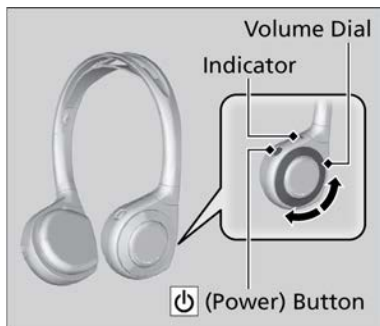
This vehicle's overhead mounted display includes mercury-containing components. Upon removal or replacement, please reuse, recycle, or dispose of as hazardous waste.

■ Wireless Headphones

Your vehicle comes with two sets of wireless headphones.

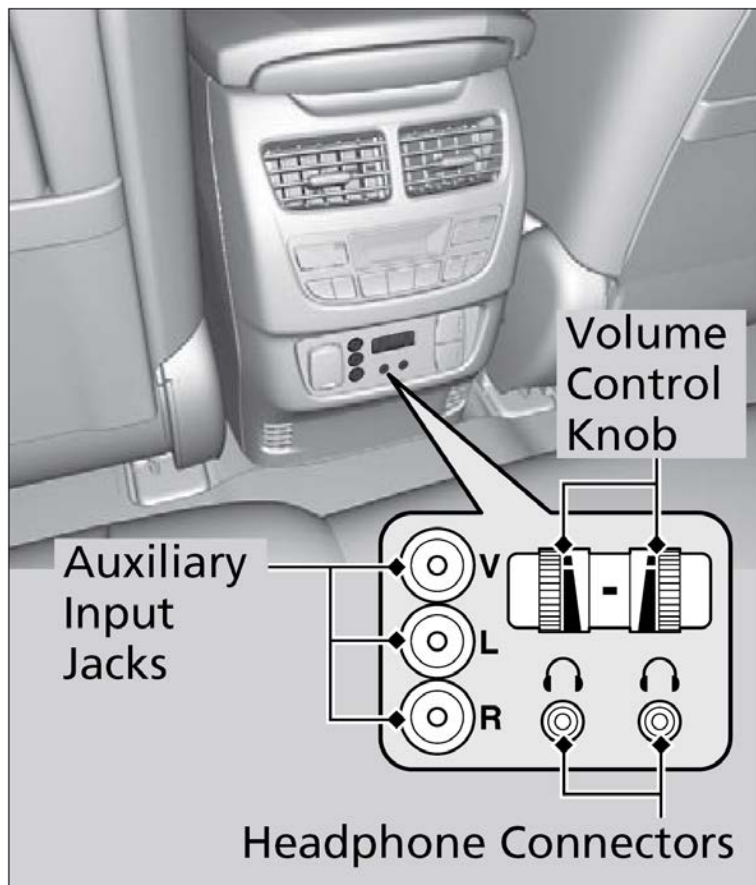
Press the Power button on the right earpiece to turn on the headphones.

Turn the dial on the right earpiece to adjust the volume.



■ Auxiliary Console Panel

Multiple connection inputs are located on the back of the center console.



V = Video jack

L = Left audio jack

R = Right audio jack

Auxiliary input jacks

The system will accept auxiliary inputs from standard video games and video equipment. Some video game power supplies may cause poor picture quality.

Headphone connectors

The headphones can also be used by connecting to the auxiliary console panel. There are two headphone connectors for the rear passengers. Each connector has its own volume control.