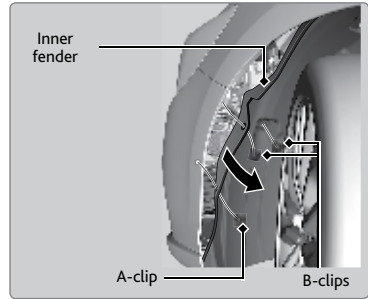


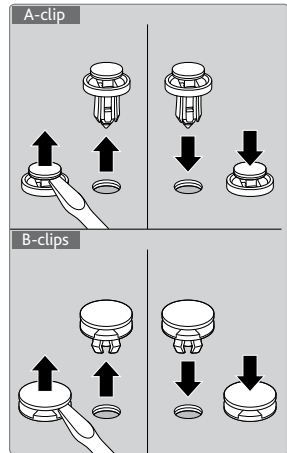
Front Bumper Fuse Box

Located on the the left side of the front bumper. Follow the steps below to access the fuses:

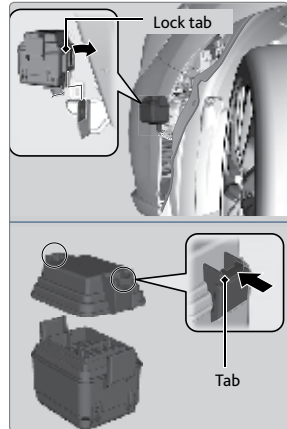
1. Turn the steering wheel all the way to the right. Turn off the power system.



2. Remove the A-clip and the B-clips by inserting a flat-tip screwdriver and lifting the center pins up.
3. Pull the inner fender back.



4. Pull the lock tab (as shown) and pull out the fuse box. Push the tabs to remove the cover.



	Circuit Protected	Amps
1	TCU 1	10 A
2	TCU 2	10 A
3	TCU 3	10 A