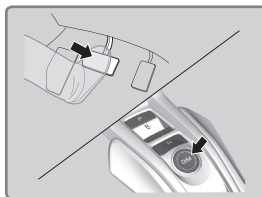
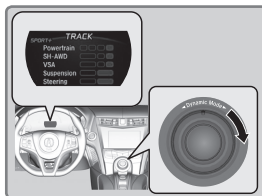


■ Launch Control

The vehicle controls the engine and transmission response for maximum acceleration from a stop. Launch control functions in TRACK mode, with VSA turned on. This feature should be used only in closed-course settings.

To engage launch control:

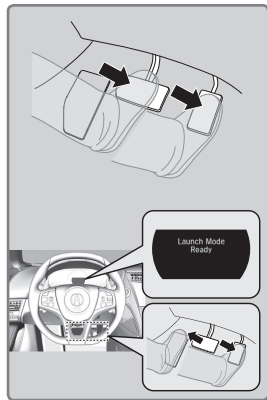
1. In Sport+ mode, turn and hold the IDS Mode Switch to engage TRACK mode.
2. Depress the brake pedal and change the gear selector to D/M. Keep the pedal depressed.
3. Release the parking brake.



4. Press the accelerator to the floor.

5. When Launch Mode Ready appears in the Driver Information Interface, release the brake all at once.

To cancel Launch Mode, take your foot off the accelerator.



WARNING

Using this system on public roads that are used by other vehicles and pedestrians can result in a collision involving serious injury or death.