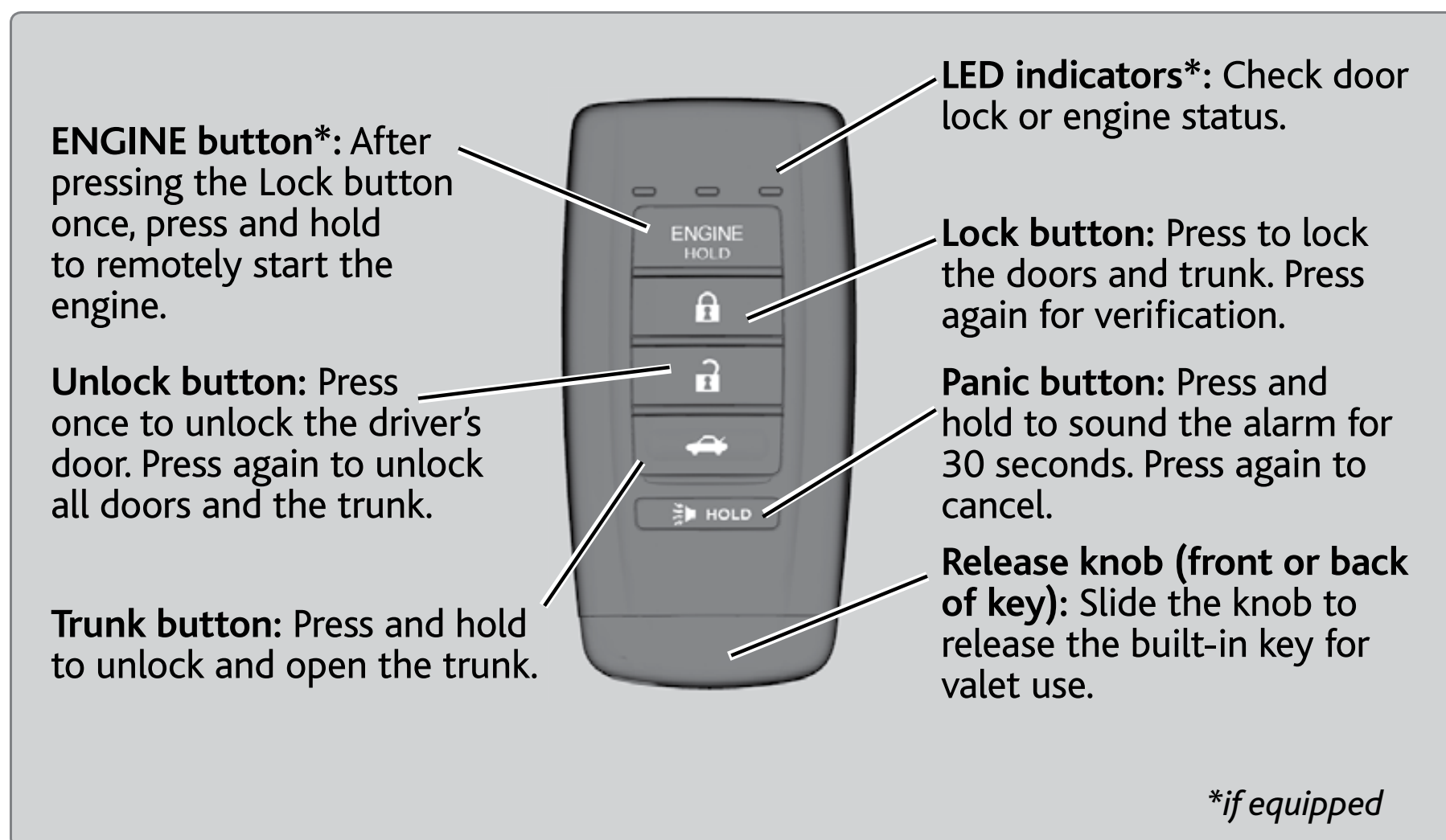


VEHICLE CONTROLS

Learn about the various controls necessary for operating and driving the vehicle.

Using the Remote Transmitter

Lock or unlock the doors and trunk.



NOTICE

Leaving the remote transmitter in the vehicle can result in theft or accidental movement of the vehicle. Always take it with you whenever you leave the vehicle unattended.

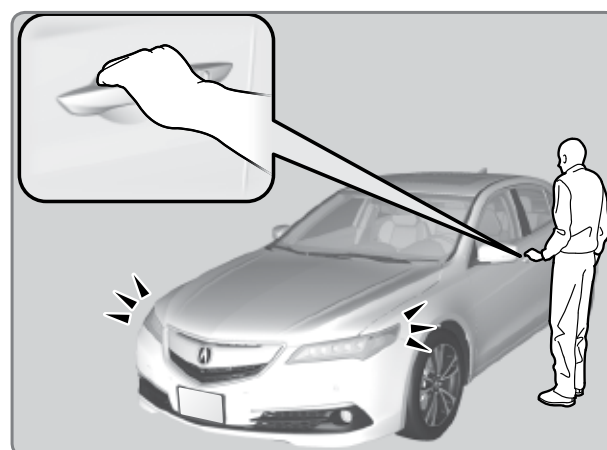
Keyless Access System

When you carry the remote transmitter (for example, in a pocket or purse) and it is outside the vehicle and within range (about 32 inches or 80 cm), you can lock or unlock the doors and trunk without handling the transmitter.

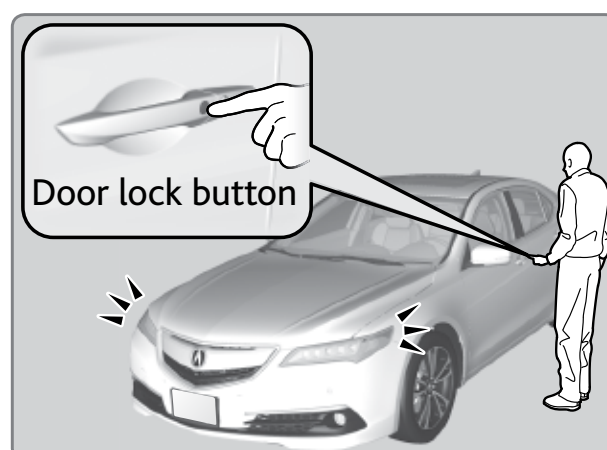
■ Unlocking/Locking the Doors

To unlock: Grab either front door (or rear door*) handle when the vehicle is off.

The driver's seat slides rearward when the driver's door is opened to allow easy entry. The seat slides forward to the last driving position when the vehicle is turned on.

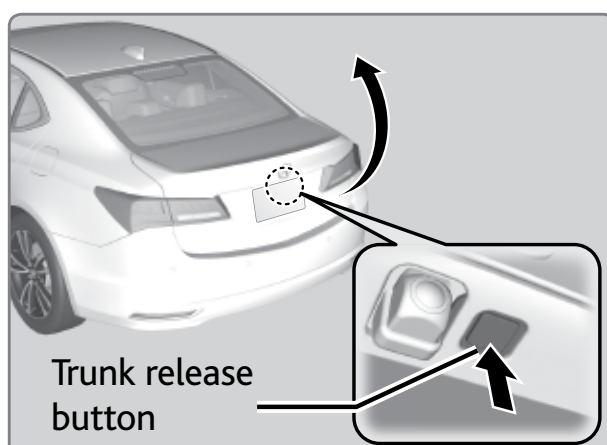


To lock: Press the door lock button on either front door (or rear door*) handle when the vehicle is off. If the remote transmitter is inside the vehicle, the doors will not lock.



■ Opening the Trunk

Press the trunk release button under the trunk handle to unlock and open the trunk. The vehicle can be on or off.



**Some Canadian models include rear door keyless access.*