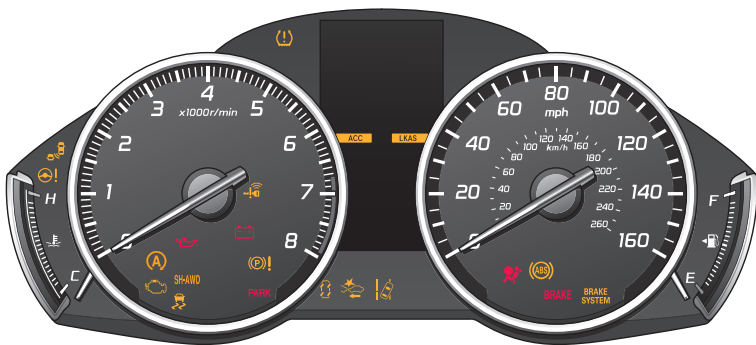


# INSTRUMENT PANEL

Learn about the indicators, gauges, and displays related to driving the vehicle.



Indicators briefly appear with each engine start and then go out. Red and amber indicators are most critical. Blue and green indicators are used for general information.

## Malfunction Indicators

These are the most critical indicators. If they come on and stay lit while driving or at any other time, there may be a problem. See your dealer if necessary.



### Brake system

- Brake fluid is low.
- There is a malfunction in the brake system.

Press the brake pedal lightly to check pedal pressure. If normal, check the brake fluid level when you stop. If abnormal, take immediate action. If necessary, downshift the transmission to slow the vehicle using engine braking. Have your vehicle repaired immediately.



### Low oil pressure

Engine oil pressure is low. Stop in a safe place. Open the hood and check the oil level, and add oil if necessary. If the indicator does not turn off, have your vehicle repaired immediately.



### Malfunction indicator lamp (check engine light)

- The emissions control system may have a problem.
- (Blinks) A misfire in the engine's cylinders is detected. Stop in a safe place, and wait for the engine to cool down.



### Charging system

The battery is not charging. Turn all electrical items off, but do not turn the vehicle off to prevent further battery discharge. Have your vehicle repaired immediately.

**ABS (Anti-Lock Brake System)**

There is a problem with the anti-lock brake system. Your vehicle still has normal braking ability, but no anti-lock function.

**Supplemental Restraint System (SRS)**

There is a problem with one of the airbag systems or seat belt tensioners\*.

**Electric Power Steering (EPS)**

There is a problem with the electric power steering system. Stop in a safe place and restart the engine.

**Tire Pressure Monitoring System (TPMS)**

If the indicator blinks and stays on, there is a problem with the tire pressure monitoring system.

**Keyless Access system**

There is a problem with the keyless access system.

**Vehicle Stability Assist® (VSA®) system**

There is a problem with the VSA system or hill start assist system.

**Brake system**

There is a problem with one of the braking systems. Avoid high speeds and sudden braking. Your vehicle still has normal braking ability.

**Blind spot information (BSI)\***

There is a problem with the system, or the sensor is blocked.

**Adaptive Cruise Control (ACC) with Low Speed Follow\***

There is a problem with the ACC system.

**Lane Keeping Assist System (LKAS)\***

There is a problem with the LKAS.

**Forward Collision Warning (FCW)\*/Collision Mitigation Braking System™ (CMBS™)\***

There is a problem with the system, the system is turned off, the temperature is too high, or the camera is blocked.

**Lane Departure Warning (LDW)\*/Road Departure Mitigation (RDM)\***

There is a problem with the system, the temperature is too high, or the camera is blocked.

**Electric parking brake system**

There is a problem with the electric parking brake system. Stop in a safe place and avoid using the parking brake.

**Precision All-Wheel Steer™ (P-AWS®)\***

There is a problem with the system. Vehicle speed may be limited to 50 mph (80 km/h) or less.

PARK  
U.S.

Canada

**Electric parking brake**

If the indicator blinks, there is a problem with the electric parking brake.

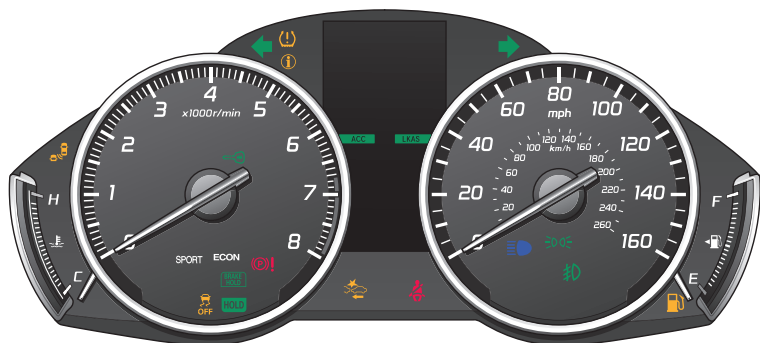
**Auto idle stop\***

If the indicator blinks, there is a problem with the system.

SH-AWD

**Super Handling-All Wheel Drive™ (SH-AWD®)\***

There is a problem with the system. The engine drives only the front wheels. If the indicator blinks, the differential temperature is too high. Stop in a safe place, shift to Park (P), and idle until the indicator goes off.



## Condition Indicators

These indicators may require you to perform an action.

PARK  
U.S.

Canada

**Electric parking brake**

Release the parking brake before driving. You will hear a beep if you drive with it not fully released.

**Seat belt reminder**

Make sure seat belts are fastened for you and all passengers. The indicator blinks and beeps sound continuously if you or your front passenger has not fastened your seat belts when you begin driving. If the indicator remains on after seat belts are fastened, see your dealer.

**Low fuel**

Refuel as soon as possible. If the indicator blinks, there is a problem with the fuel gauge. See your dealer.

**Low tire pressure**

Stop in a safe place, check tire pressures, and inflate tire(s) if necessary.

**System message**

When a condition or malfunction indicator comes on, a message also appears on the multi-information display. Check the display for more information.

**Immobilizer**

Your remote transmitter cannot be recognized by the vehicle. If the indicator blinks, you may not be able to start the engine. Turn the vehicle off, and then on again. If it continues to blink, there may be a problem with the system. See your dealer.

**On/Off Indicators**

These indicators remind you when an item is on or off.



VSA off



BSI\* off



VSA engaged (blinks)



ACC\* on



CRUISE MAIN on



LKAS\* on



CRUISE CONTROL on



SPORT mode on



Turn signals/hazards on



ECON mode on



Exterior lights on



Automatic brake hold on



Fog lights\* on



Automatic brake activated



High beams on



Auto idle stop\* activated



FCW\*/CMBS™\* off



Auto idle stop\* off