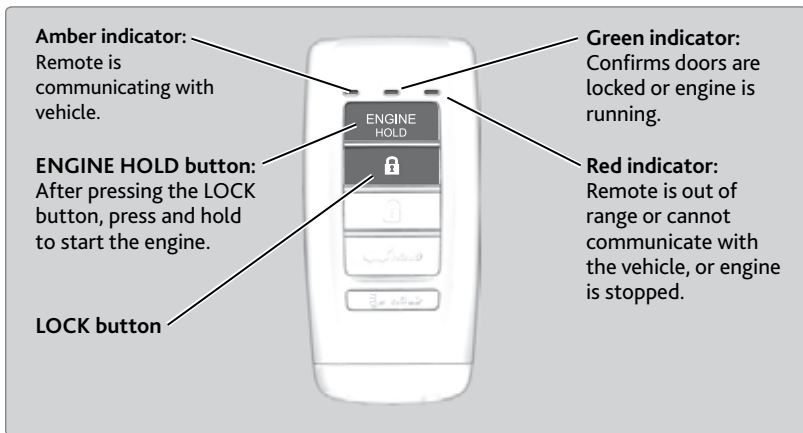


## Remote Engine Start\*

Start your vehicle's engine from extended distances using the two-way remote transmitter before you enter the vehicle.



Make sure the vehicle is in a safe location when using remote engine start (i.e., a well ventilated area, away from any flammable materials).

### ■ Starting the Engine

Press the LOCK button, then press and hold the ENGINE HOLD button to remotely start the engine.

The engine runs for up to 10 minutes. To extend the run time for another 10 minutes, repeat the procedure during the initial 10 minutes.

While the engine is running, the climate control system adjusts the cabin temperature, the security system remains on, and lights and accessories remain off.

### ■ Stopping the Engine

Press and hold ENGINE.

The engine will also stop if it has been running for more than 10 minutes, or if any door is opened without using the remote or keyless access.

### **WARNING**

Engine exhaust contains toxic carbon monoxide gas.

Breathing carbon monoxide can kill you or cause unconsciousness.

Never use the remote engine starter when the vehicle is parked in a garage or other area with limited ventilation.