

INSTRUMENT PANEL

Learn about the indicators, gauges, and displays related to driving the vehicle.



Indicators briefly appear with each engine start and then go out. Red and amber indicators are most critical. Blue and green indicators are used for general information.

Malfunction Indicators

These are the most critical indicators. If they come on and stay lit while driving or at any other time, there may be a problem. See your dealer if necessary.

BRAKE Brake system



U.S.
Canada

- Brake fluid is low.
- There is a malfunction in the brake system.

Press the brake pedal lightly to check pedal pressure. If normal, check the brake fluid level when you stop. If abnormal, take immediate action. If necessary, downshift the transmission to slow the vehicle using engine braking. Have your vehicle repaired immediately.



Low oil pressure

Engine oil pressure is low. Stop in a safe place. Open the hood and check the oil level, and add oil if necessary. If the indicator does not turn off, have your vehicle repaired immediately.



Malfunction indicator lamp (check engine light)

- The emissions control system may have a problem, or the fuel cap is missing or loose.
- (Blinks) A misfire in the engine's cylinders is detected. Stop in a safe place, and wait for the engine to cool down.



Charging system

The battery is not charging. Turn off all electrical items, but do not turn off the vehicle to prevent further battery discharge. Have your vehicle repaired immediately.

**Anti-Lock Brake System (ABS)**

There is a problem with the anti-lock brake system. Your vehicle still has normal braking ability, but no anti-lock function.

**Supplemental Restraint System (SRS)**

There is a problem with one of the airbag systems or seat belt tensioners.

**Electric Power Steering (EPS)**

There is a problem with the electric power steering system.

**Tire Pressure Monitoring System (TPMS)**

(Blinks and stays on) There is a problem with the tire pressure monitoring system, or the vehicle is fitted with the spare tire.

**Keyless Access system**

There is a problem with the keyless access system.

AWD All-Wheel Drive (AWD) system*

- There is a problem with the AWD system. Only the front wheels are powered.
- (Blinks) The AWD system has overheated and is inactive. Stop in a safe place, shift to Park (P), and idle the engine until the indicator goes off.

**Vehicle Stability Assist (VSA®) system**

There is a problem with the VSA system or the hill start assist system.

**Brake system**

There is a problem with the hydraulic brake boost system.

**Blind spot information (BSI)***

There is a problem with the system, or the sensor is blocked.

**Lane Departure Warning (LDW)***

There is a problem with the system, the temperature is too high, or the camera is blocked.

**Adaptive Cruise Control (ACC)***

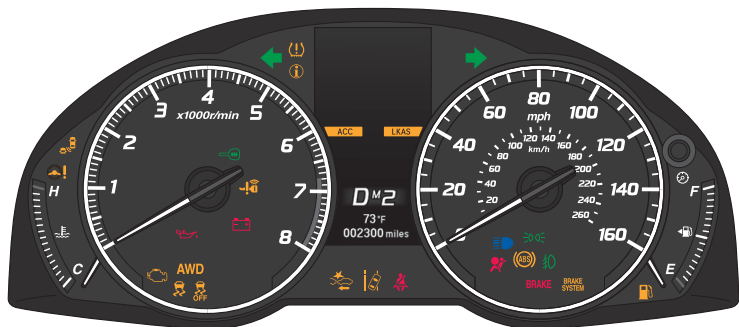
There is a problem with the system.

**Lane Keeping Assist System (LKAS)***

There is a problem with the system.

**Collision Mitigation Braking System™ (CMBS™)***

There is a problem with the system, the temperature is too high, or the camera or sensor is blocked.



Condition Indicators

These indicators may require you to perform an action.

BRAKE Parking brake



U.S.
Canada

Release the parking brake before driving. You will hear a beep if you drive with it not fully released.



Seat belt reminder

Make sure seat belts are fastened for you and all passengers. The indicator blinks and beeps sound continuously if you or your front passenger has not fastened your seat belts when you begin driving. If the indicator remains on after seat belts are fastened, see your dealer.



Low fuel

Refuel as soon as possible. If the indicator blinks, there is a problem with the fuel gauge. See your dealer.



Door/tailgate open*

Close any open doors or the tailgate. A beep sounds if any doors or the tailgate is opened while driving.



Low tire pressure

Stop in a safe place, check tire pressures, and inflate tire(s) if necessary.



System message

When a condition or malfunction indicator comes on, a message also appears on the multi-information display. Check the display for more information.



Immobilizer

Your remote transmitter cannot be recognized by the vehicle. If the indicator blinks, you may not be able to start the engine. Turn the vehicle off and then on again. If it continues to blink, there may be a problem with the system. See your dealer.

**if equipped*

On/Off Indicators

These indicators remind you when an item is on or off.



VSA off



VSA engaged (blinks)



CRUISE MAIN on*



CRUISE CONTROL on*



Turn signals/hazards on



Exterior lights on



Fog lights on*



High beams on



BSI off*



ACC on*



LKAS on*



CMBS™ off*