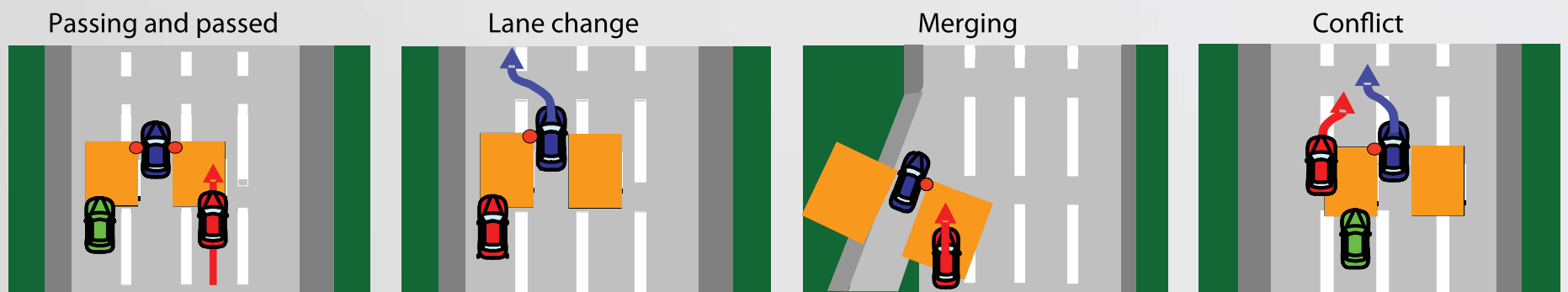


BLIND SPOT INFORMATION (BSI) SYSTEM

Assists you in determining if there are detected vehicles in your blind spots. *Available with Technology and Advance Packages.*

How It Works

A radar sensor under each corner of the rear bumper alerts you to a detected vehicle in your left or right blind spots.

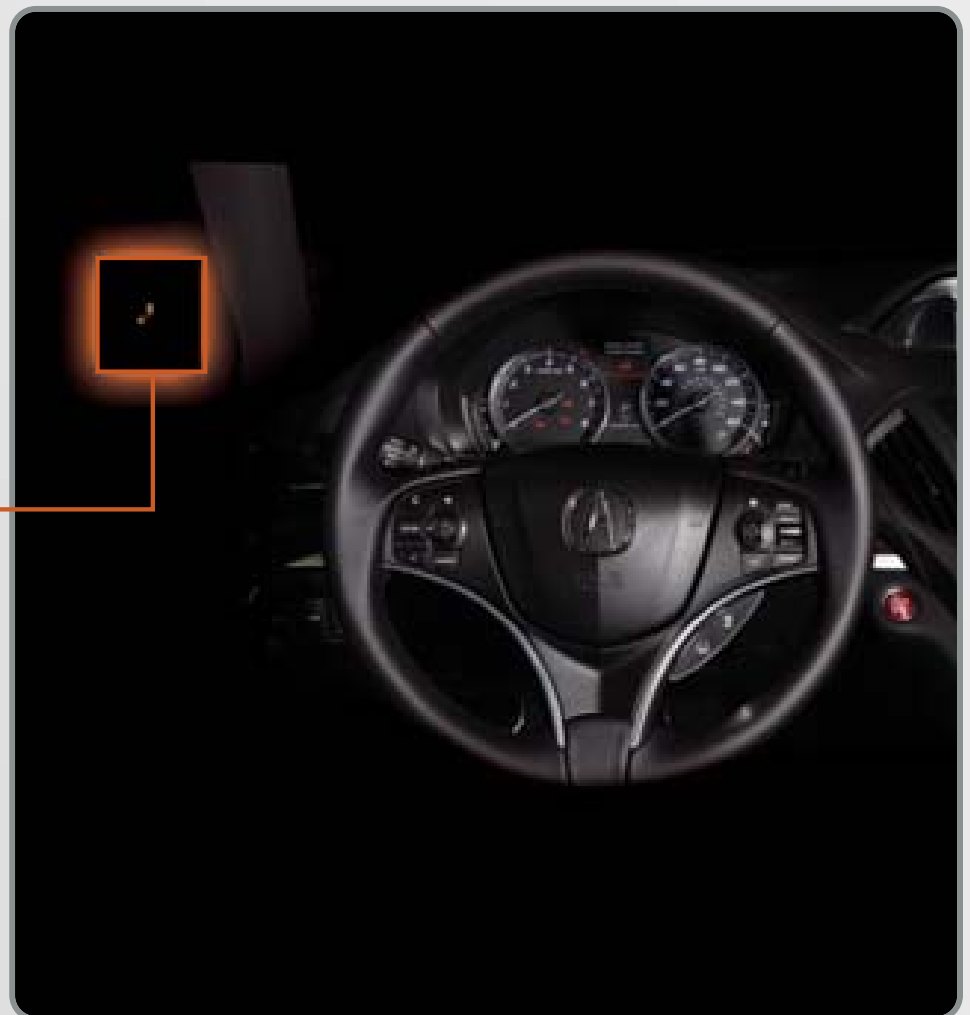


Minimum operating speed: 20 mph

When a vehicle is detected in your blind spot, the blind spot indicator turns on and stays lit until the area is clear.



When your turn signal is on and a vehicle is detected, the blind spot indicator blinks and a beep sounds until the area is clear or the turn signal is off.



Changing Settings

Choose alert types, or turn the system off.*



1. Press **SETTINGS**. Use the interface dial to make and enter selections.
2. Select **Vehicle Settings**.
3. Select **Blind Spot Info**.
4. Select an alert type or **Off**.
5. Press **BACK** to exit the menu.

* You can also change these settings using the multi-information display.