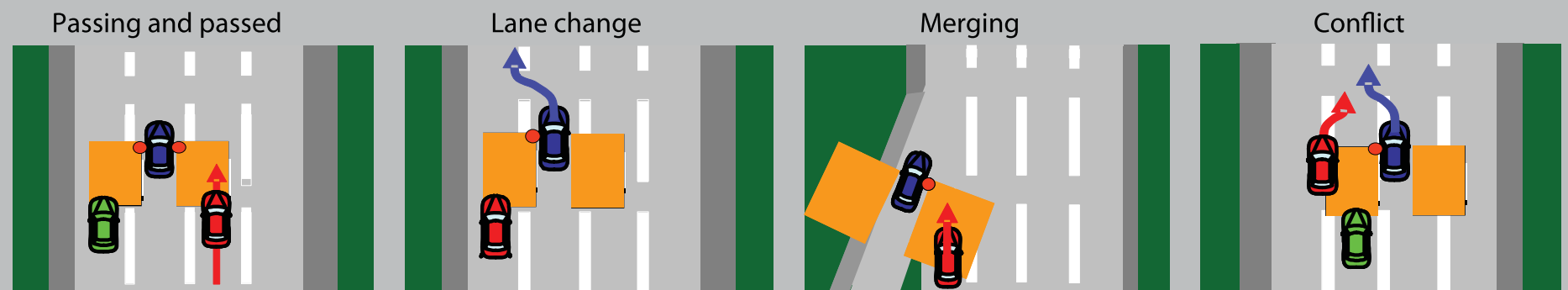


# Blind Spot Information (BSI) System

Assists you in determining if there are detected vehicles in your blind spots.

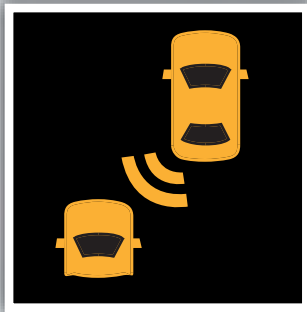
## How It Works

A radar sensor under each corner of the rear bumper alerts you to a detected vehicle in your left or right blind spots.

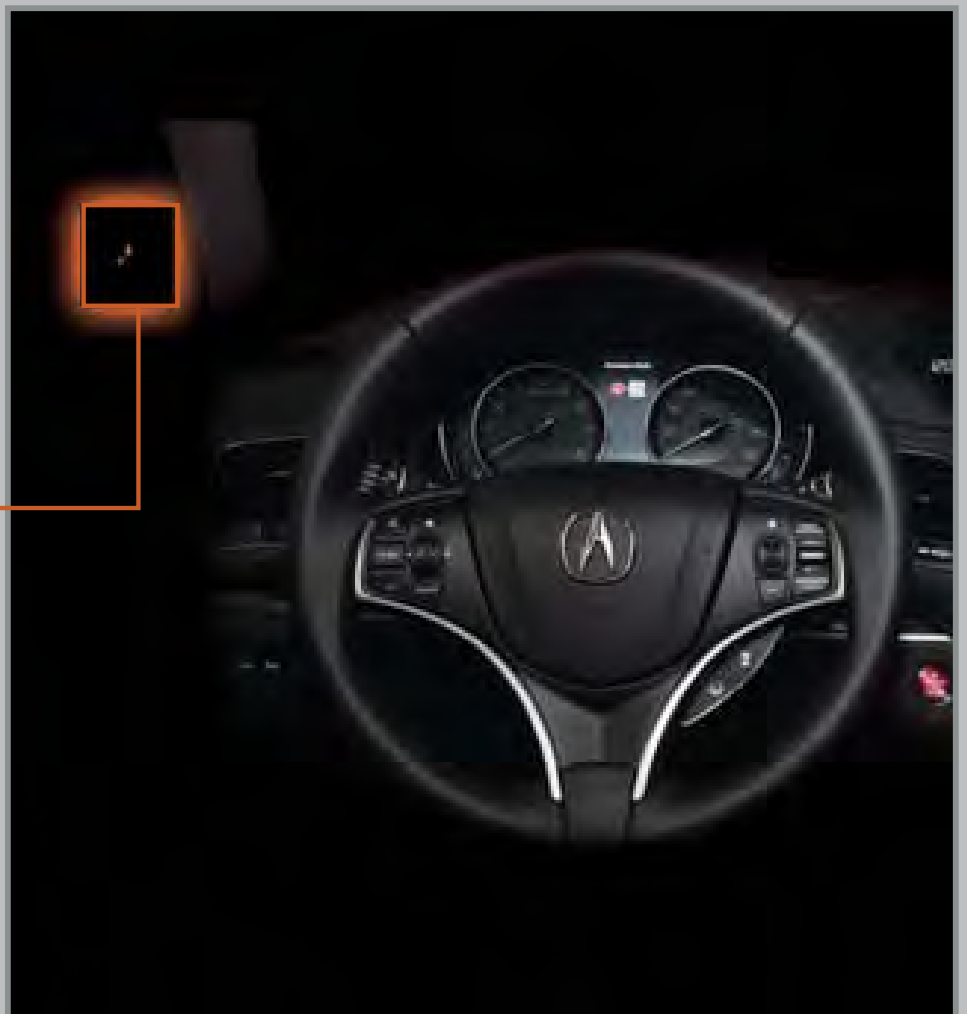


Minimum operating speed: 20 mph

When a vehicle is detected in your blind spot, the blind spot indicator turns on and stays lit until the area is clear.



When your turn signal is on and a vehicle is detected, the blind spot indicator blinks and a beep sounds until the area is clear or the turn signal is off.



## Changing Settings

Choose alert types, or turn the system off.



1. Press SETTINGS. Use the interface dial to make and enter selections.
2. Select Vehicle Settings.
3. Select Blind Spot Info.
4. Select an alert type or Off.
5. Press BACK to exit the menu.

You can also change these settings using the multi-information display.