

Tire Pressure Monitoring System

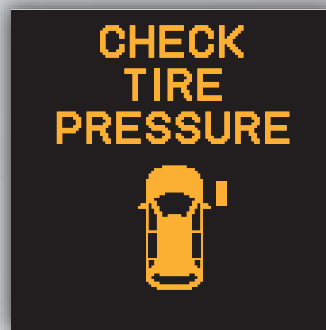
Alerts you when one or more of your tires have significantly low pressure. Toggle to the tire pressure monitor display to view pressure readings on the MID.

How It Works



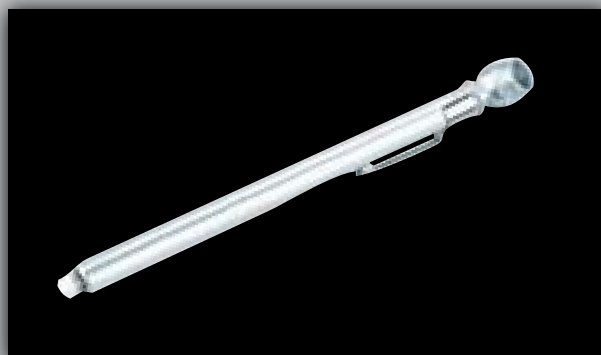
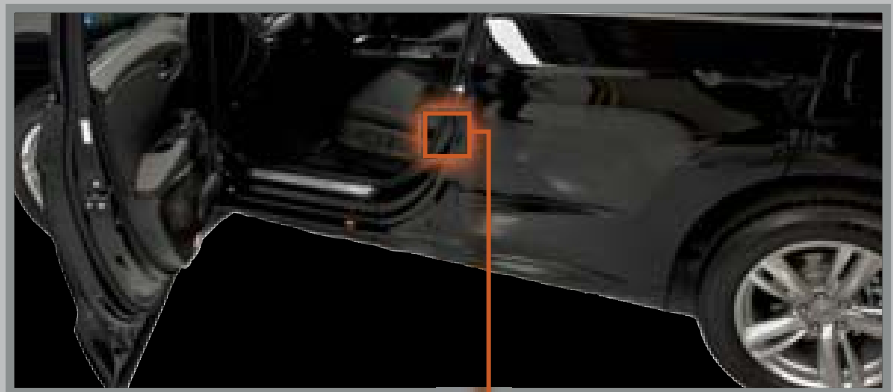
If the tire pressure drops significantly below recommended levels:

- The low tire pressure indicator comes on.
- A “CHECK TIRE PRESSURE” message appears on the MID, showing which tire(s) have low pressure.



What to Do

1. Visually inspect the tires for damage.
2. Use a tire air pressure gauge (or check the MID) to check which tire(s) have low pressure.



3. Inflate the tire(s), if necessary, to the recommended pressures listed on the label on the driver's doorjamb.

