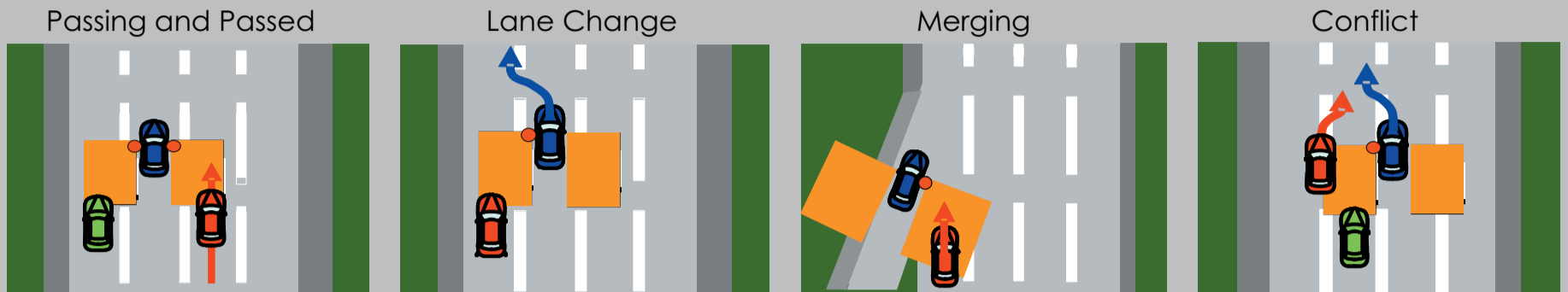


BLIND SPOT INFORMATION SYSTEM (BSI) (Advance)

Assists you in determining if there are vehicles in your blind spots.

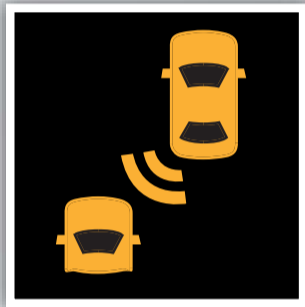
How It Works

A radar sensor on each corner of the rear bumper alerts you to a detected vehicle in your left or right blind spots.

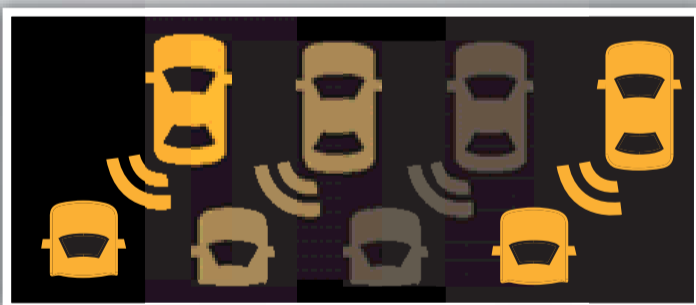


Minimum operating speed: 6-7 mph

When a vehicle is detected in your blind spot, the blind spot indicator turns on and stays lit until the area is clear.

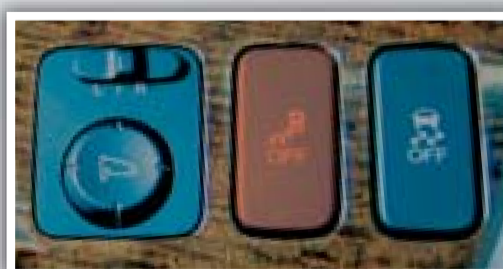


When your turn signal is on and a vehicle is detected, the blind spot indicator blinks until the area is clear or the turn signal is off.



Left BSI indicator shown

Turning BSI Off/On



Press the BSI OFF button on the dashboard to turn BSI off or on.



A message briefly appears on the MID screen showing the system status.