

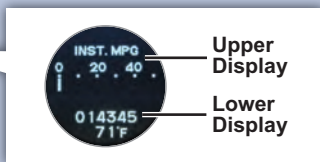
## Multi-Information Display

### Multi-Information Display (MID)

Consists of several displays that provide you with useful information.

#### Accessing MID

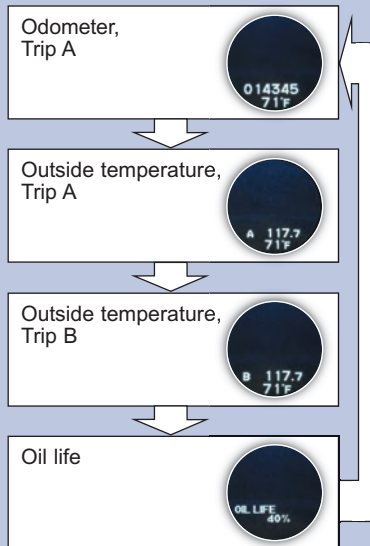
Once you start the engine, the MID shows the last active lower display. **Press** either Info button (▲/▼) to see the last active selection on the upper display.



To **toggle** between the different displays, **press** either Info button (▲/▼) for the upper display and **press** the SEL/RESET button for the lower display.



#### MID Lower Displays



## MID Upper Displays

Basic trip computer displays are shown here.

