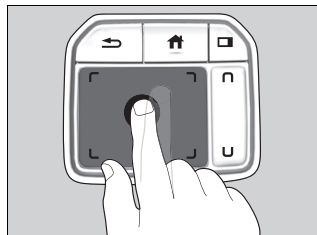


## True Touchpad Interface

You can operate the system using the True Touchpad Interface.

### A-Zone Touchpad Operation

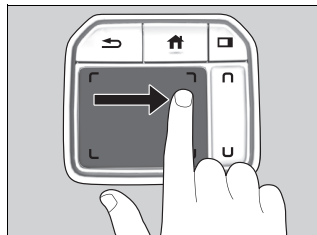


#### ■ Click

Lightly press the A-zone touchpad to select an item.

#### ■ Press and hold

Press and hold to initiate edit mode throughout the system.



#### ■ Swipe

Swipe or drag your finger in various directions to operate each screen.

### True Touchpad Interface

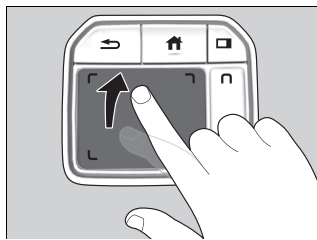
#### True Touchpad Interface Operation

- Some items may be grayed out during driving to reduce the potential for distraction.
- You can select them when the vehicle is stopped or use voice commands.
- Wearing gloves may limit or prevent the True Touchpad Interface response.
- Some electronics like inverters may cause slow response while using the True Touchpad Interface.

You can operate the True Touchpad Interface using gloves when you set the **Touchpad Sensitivity** setting to **High**. However, the True Touchpad Interface cannot be operated with insulated gloves.

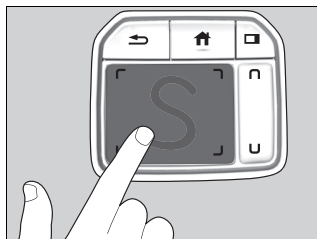
✎ **Customized Features** P. 345

Continued



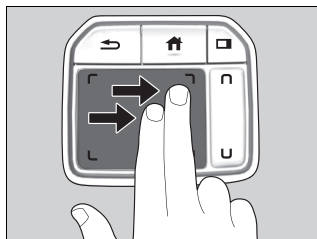
#### ■ Flick

Flick your finger up/down or left/right to scroll in lists or change pages throughout the system.



#### ■ Hand-writing a character

Move your finger quickly to trace a character on the A-zone touchpad.

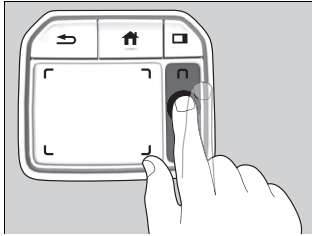


#### Models with navigation system

#### ■ Swipe with two fingers

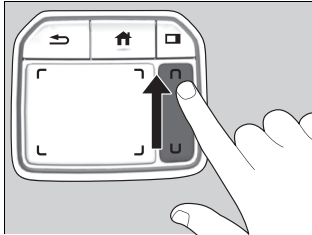
Swipe (or drag) two fingers across the screen to move the map.

## ■ B-Zone Touchpad Operation



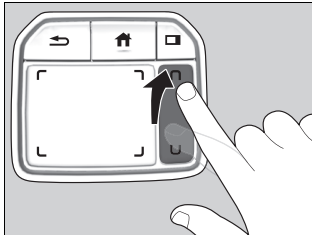
### ■ Click

Lightly press (click) the B-zone touchpad to select a card.



### ■ Slide

Slide your finger up or down to highlight what you would like to select, such as a card or the status bar.



### ■ Flick

Flick up or down to cycle through card displayed in the B-zone.