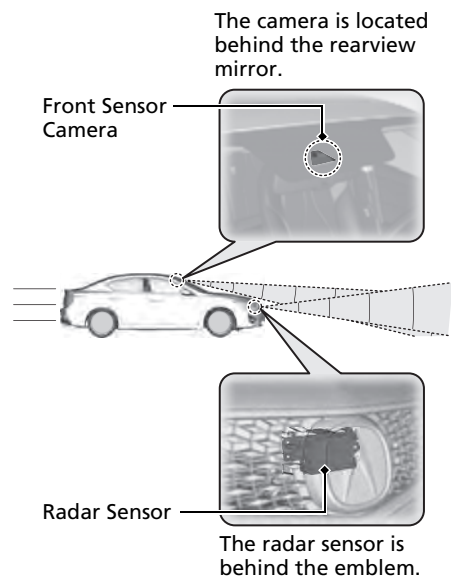


AcuraWatch™

➡ P. 452

AcuraWatch™ is a driver support system which employs the use of two distinctly different kinds of sensors, a radar sensor located behind the emblem and a front sensor camera mounted to the interior side of the windshield, behind the rearview mirror.



Collision Mitigation Braking System™ (CMBS™)

➡ P. 455

The system can assist you when it determines there is a possibility of your vehicle colliding with a vehicle or a pedestrian detected in front of your vehicle. The CMBS™ is designed to alert you when the potential for a collision is determined, as well as to reduce your vehicle speed to help minimize collision severity when a collision is deemed unavoidable.

Adaptive Cruise Control (ACC)

➡ P. 466

Helps maintain a constant vehicle speed and a set following-interval behind a vehicle detected ahead of yours, without you having to keep your foot on the brake or the accelerator.

Lane Keeping Assist System (LKAS)

➡ P. 481

Provides steering input to help keep the vehicle in the middle of a detected lane and provides visual alert if the vehicle is detected drifting out of its lane.

Road Departure Mitigation (RDM) System

➡ P. 491

Alerts and helps to assist you when the system detects a possibility of your vehicle unintentionally crossing over detected lane markings and/or leaving the roadway altogether.

AcuraWatch™ is a driver support system which employs the use of two distinctly different kinds of sensors: a radar sensor located behind the emblem and a front sensor camera mounted to the interior side of the windshield, behind the rearview mirror.

AcuraWatch™ has following functions.

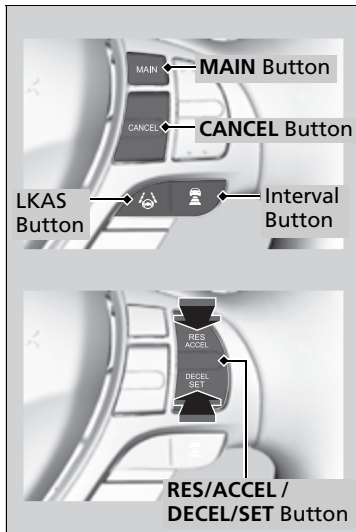
■ **The functions which do not require button operations to activate**

- Collision Mitigation Braking System™ (CMBS™) ➡ P. 455
- Road Departure Mitigation (RDM) System ➡ P. 491

■ **The functions which require button operations to activate**

- Adaptive Cruise Control (ACC) ➡ P. 466
- Lane Keeping Assist System (LKAS) ➡ P. 481

■ Operation Buttons for the ACC/LKAS



■ MAIN Button

Press to activate standby mode for ACC and LKAS. Or press to cancel these systems.

■ LKAS Button


Press to activate or cancel the LKAS.

■ RES/ACCEL / DECEL/SET Button

Press **RES/ACCEL** to resume the ACC or increase the vehicle speed.

Press **DECEL/SET** to set the ACC or decrease the vehicle speed.

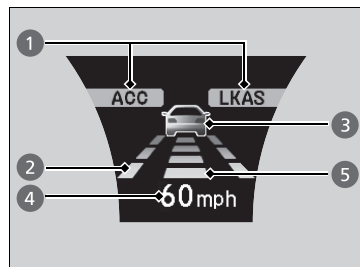
■ Interval Button

Press the  (interval) button to change the ACC following-interval.

■ CANCEL Button

Press to cancel ACC.

■ Multi-Information Display Content



You can see the current state of ACC and LKAS.

- ① Indicates that ACC and LKAS are ready to be activated.
- ② Indicates that LKAS is activated and whether or not traffic lane lines are detected.
- ③ Indicates whether or not a vehicle is detected ahead.
- ④ Shows the set vehicle speed.
- ⑤ Shows the set vehicle interval.