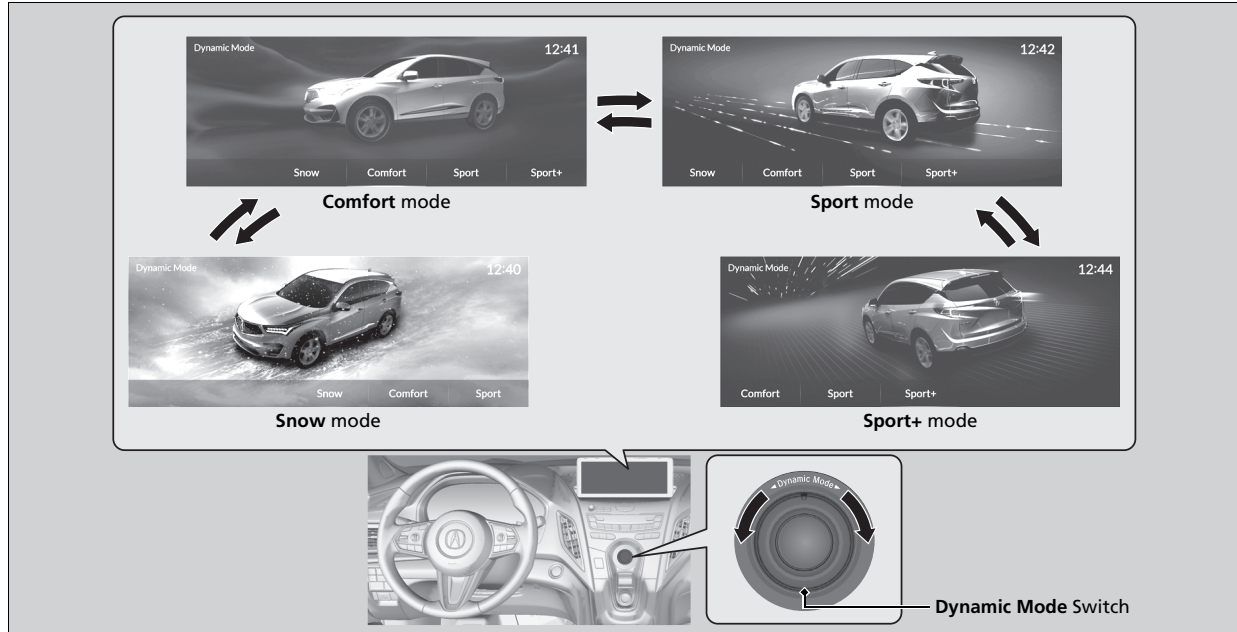


Integrated Dynamics System

Modifies the dynamic character of the vehicle. There are four modes to select from: **Comfort**, **Sport**, **Sport+**, and **Snow**. Turn the **Dynamic Mode** switch to select a mode. The mode you have selected appears on the audio/information screen.

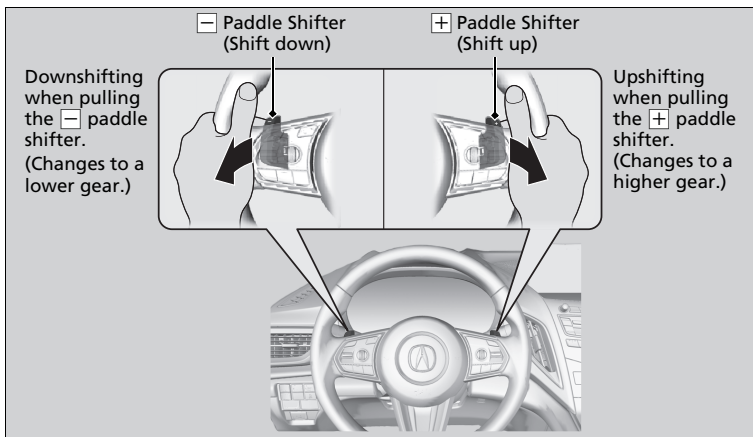


| Mode | Function |
|----------------|---|
| Sport+ | Adds to Sport to allow for increased performance by enhancing throttle response and changing the shift map. |
| Sport | Enhances vehicle response feel through decreased steering assist, heightened throttle response, increased SH-AWD* torque bias, and modified active sound control. |
| Comfort | Maximizes driver comfort through increased steering assist. |
| Snow | Use when driving on snowy road surfaces. |

When the power mode is turned off, the drive mode that the vehicle was in is registered with the vehicle. When the vehicle is driven the next time, it detects which remote transmitter is being used and then reactivates or changes the drive mode that the vehicle was in the last time the same transmitter was used.

- If **Comfort** mode or **Sport** mode was previously registered, **Comfort** mode or **Sport** mode will be reactivated.
- If **Snow** mode was previously registered, the drive mode will be changed to **Comfort** mode.
- If **Sport+** mode was previously registered, the drive mode will be changed to **Sport** mode.

Sequential Mode Operation



Sequential Mode Operation

Each paddle shift operation makes a single gear change. To change gears continuously, release the paddle shifter before pulling it again for the next gear.

If the sequential mode gear selection indicator blinks when you try to shift up or down, this means your vehicle speed is not in its allowable gear range. Slightly accelerate to shift up and decelerate to shift down while the indicator is blinking.

The transmission is in **S** and **Sport+** mode, to prioritize the engine performance enhancement, the transmission may not allow for shifting up while the engine speed is low.