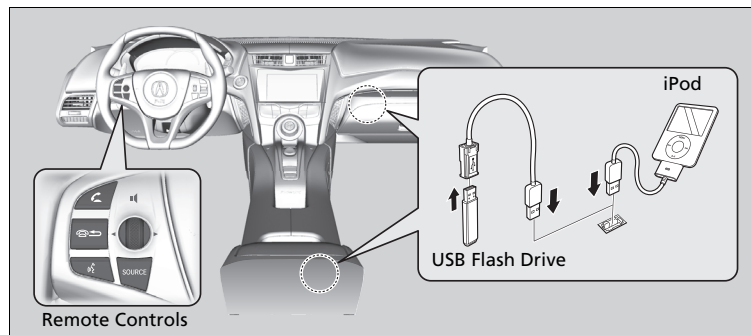


About Your Audio System

The audio system features FM radio and SiriusXM® Radio service*. It can also play USB flash drives, iPod, iPhone and **Bluetooth®** devices.

You can operate the audio system from the icons on the touchscreen interface or the remote controls on the steering wheel.



About Your Audio System

SiriusXM® Radio* is available on a subscription basis only. For more information on SiriusXM® Radio, contact an authorized Acura NSX dealer.

General Information on the Audio System P. 230

SiriusXM® Radio* is available in the United States and Canada, except Hawaii, Alaska, and Puerto Rico.

SiriusXM®* is a registered trademark of SiriusXM Radio, Inc.

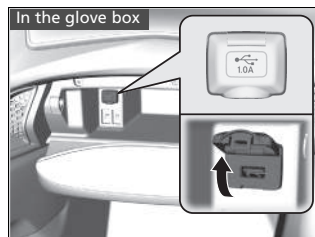
iPod, iPhone and iTunes are trademarks of Apple Inc.

State or local laws may prohibit the operation of handheld electronic devices while operating a vehicle.

* Not available on all models

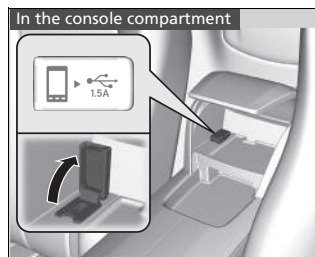
USB Ports

Install the iPod USB connector or the USB flash drive to the USB port.



■ In the glove box

The USB port (1.0A) is for playing audio files on a USB flash drive and connecting a cellular phone and charging device.



■ In the console compartment

The USB port (1.5A) is for charging devices, playing audio files and connecting compatible phones with Apple CarPlay or Android Auto.

- ▶ To prevent any potential issues, be sure to use an Apple MFi Certified Lightning Connector for Apple CarPlay, and for Android Auto, the USB cables should be certified by USB-IF to be compliant with USB 2.0 Standard.

▣ USB Ports

- Do not leave the iPod or USB flash drive in the vehicle. Direct sunlight and high temperatures may damage it.
- We recommend using an extension cable with the USB port.
- Do not connect the iPod or USB flash drive using a hub.
- Do not use a device such as a card reader or hard disk drive, as the device or your files may be damaged.
- We recommend keeping your data backed up before using the device in your vehicle.
- Displayed messages may vary depending on the device model and software version.

If the audio system does not recognize the iPod, try reconnecting it a few times or reboot the device. To reboot, follow the manufacturer's instructions provided with the iPod or visit www.apple.com/ipod.

▣ USB charge

The USB port can supply up to 1.0A/1.5A of power. It does not output 1.0A/1.5A unless requested by the device.

For amperage details, read the operating manual of the device that needs to be charged.


Set the power mode to ACCESSORY or ON first.

Under certain conditions, a device connected to the port may generate noise to the radio station you are listening to.

Audio System Theft Protection

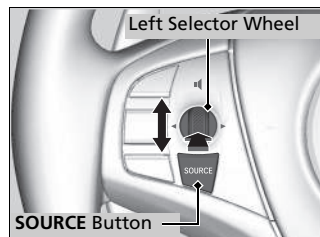
The audio system is disabled when it is disconnected from the power source, such as when the 12-volt battery is disconnected or goes dead. In certain conditions, the system may display a code entry screen. If this occurs, reactivate the audio system.

■ Reactivating the audio system

1. Set the power mode to ON.
2. Turn on the audio system.
3. Select and hold the  (power/audio) icon for more than two seconds.
 - The audio system is reactivated when the audio control unit establishes a connection with the vehicle control unit. If the control unit fails to recognize the audio unit, you must go to an authorized Acura NSX dealer and have the audio unit checked.

Audio Remote Controls

Allows you to operate the audio system while driving.



SOURCE Button

Cycles through the audio modes as follows:
FM→SiriusXM®→USB→iPod→Pandora®→
Apps*→**Bluetooth®** Audio→Audio Apps*

Left Selector Wheel

Roll Up: To increase the volume.

Roll Down: To decrease the volume.

Push: To mute. Push again to unmute.

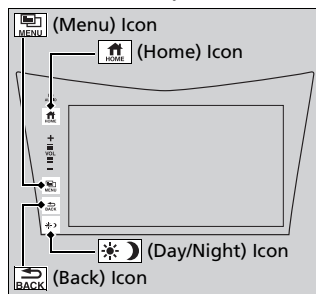
- When listening to the radio
Move to the right: To select the next preset radio station.
Move to the left: To select the previous preset radio station.
Move to the right and hold: To select the next strong station.
Move to the left and hold: To select the previous strong station.
- When listening to an iPod, USB flash drive, or **Bluetooth®** Audio
Move to the right: To skip to the next song.
Move to the left: To go back to the beginning of the current or previous song.
Move to the right and hold: To skip to the next folder.
Move to the left and hold: To go back to the previous folder.
- When listening to Pandora®
Move to the right: To skip to the next song.
Move to the right and hold: To select the next station.
Move to the left and hold: To select the previous station.

* Not available on all models

Audio Remote Controls

Some mode appears only when an appropriate device or medium is used.

To use the audio system function, the power mode must be in ACCESSORY or ON.

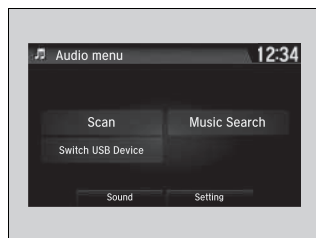


: Select to go to the home screen.

➤ **Switching the Display** P. 171

: Select to display available options including **Sound**, **View Radio Text**, **Music Search**, and playback modes.

: Select to go back to the previous screen.



: Select to change the audio/information screen brightness.

Select once and select or to make an adjustment.

► Each time you select , the mode switches among the daytime mode, nighttime mode and off mode.

Audio System Basic Operation

Audio Menu Items

➤ **Station List** P. 193, 195

➤ **Music Search List** P. 204, 213

➤ **Scan** P. 194, 195, 202, 214

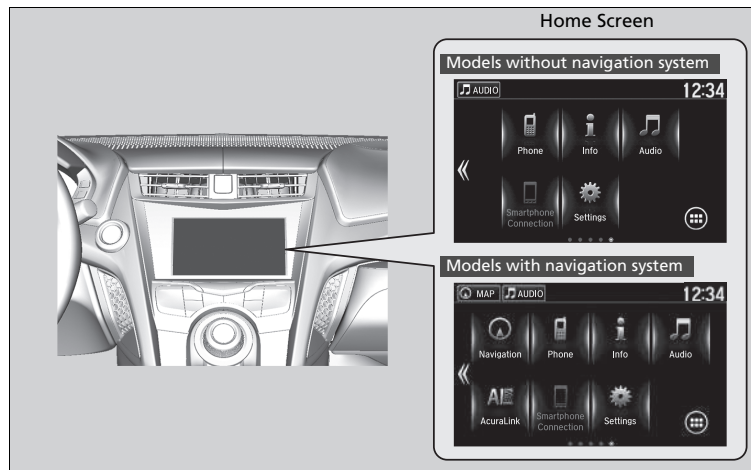
➤ **Play Mode** P. 205, 214


Audio/Information Screen

Displays the audio status and wallpaper. From this display, you can go to various setup options.

Switching the Display

Using the audio/information screen



Select  to go to the home screen.

Select **Phone**, **Info**, **Audio**, **Settings**, **Navigation***, **AcuraLink***, **Smartphone Connection** (Apple CarPlay, Android Auto), or  (app list).

Using the audio/information screen

Touchscreen operation


- Use simple gestures - including touching, swiping and scrolling - to operate certain audio functions.
- Some items may be grayed out during driving to reduce the potential for distraction.
- You can select them when the vehicle is stopped or use voice commands.
- Wearing gloves may limit or prevent touchscreen response.
- You can use the microfiber cleaning cloth included in your owner's kit to remove dust or fingerprints from the touchscreen.

■ Phone

Displays the HFL information.

📶 **Bluetooth® HandsFreeLink®** P. 274

■ Info

Displays **Trip Computer** or **Clock/Wallpaper**. Select  on the **Info Menu** screen to see all available options: **Trip Computer**, **Voice Info**, **Clock/Wallpaper** and **System/Device Information**.

Trip Computer:

- **Current Drive** tab: Displays the current trip information.
- **History of Trip A** tab: Displays information for the three previous drives. The information is stored every time you reset Trip A.
To delete the history manually, select **Delete History** on the **History of Trip A** tab. The confirmation message appears on the screen, then select **Yes**.

Voice Info: Displays a list of all voice commands.

Clock/Wallpaper: Displays the clock and wallpaper.

System/Device Information:

- **System Info:** Displays the software version of the audio system.
- **USB Info:** Displays the memory usage of the USB device.

■ Audio

Displays the current audio information.

■ Settings

Enters the customizing menu screen.

🔧 **Customized Features** P. 248

■ Navigation*

Displays the navigation screen.

📖 **Refer to the Navigation System Manual**

■ AcuraLink*

Is a subscription-based service that can provide convenient features such as voice communication if an airbag deploys, online security, and one-on-one operator assistance.

📖 **AcuraLink®*** P. 308

■ Smartphone Connection

Displays Apple CarPlay or Android Auto.

📖 **Apple CarPlay™** P. 220

📖 **Android Auto™** P. 223


■ App List

Adds or removes apps or widgets on the home screen.

📖 **Home Screen** P. 177

■ Changing the Home Screen Icon Layout



1. Select .
2. Select and hold an icon.
 - The screen switches to the customization screen.
3. Drag and drop the icon to where you want it to be.
4. Select **OK**.
 - The screen will return to the home screen.

Wallpaper Setup

You can change, store, and delete the wallpaper on the audio/information screen.

Import wallpaper

You can import up to five images, one at a time, for wallpaper from a USB flash drive.



1. Connect the USB flash drive to the USB port.
 ▶ **USB Ports** P. 167
2. Select **Settings**.
3. Select **Clock/Info**.
4. Select **Clock/Wallpaper Type**, then open the **Wallpaper** tab.
5. Select **Add New**.
 ▶ The picture name is displayed on the list.
6. Select a desired picture.
 ▶ The preview is displayed on the left side on the screen.
7. Select **Start Import** to save the data.
 ▶ The display will return to the wallpaper list.

Wallpaper Setup

The wallpaper you set up on **Clock/Wallpaper Type** cannot be displayed on the driver information interface.

- When importing wallpaper files, the image must be in the USB flash drive's root directory. Images in a folder cannot be imported.
- The file name must be fewer than 64 characters.
- The file format of the image that can be imported is BMP (bmp) or JPEG (jpg).
- The individual file size limit is 5 MB.
- The maximum image size is 4,096 × 4,096 pixels. If the image size is less than 800 × 480 pixels, the image is displayed in the middle of the screen with the extra area appearing in black.
- If the USB flash drive does not have any pictures, the **No files detected** message appears.

■ Select wallpaper

1. Select **Settings**.
2. Select **Clock/Info**.
3. Select **Clock/Wallpaper Type**, then open the **Wallpaper** tab.
 - ▶ The screen changes to the wallpaper list.
4. Select a desired wallpaper.
 - ▶ The preview is displayed on the left side on the screen.
 - ▶ The pop-up menu appears on the screen.
5. Select **Set**.
 - ▶ The display will return to the wallpaper list.

■ To view wallpaper once it is set

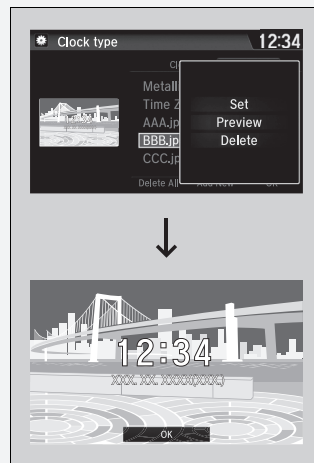
1. Select .
2. Select **Info**.
3. Select .
4. Select **Clock/Wallpaper**.


■ Delete wallpaper

1. Select **Settings**.
2. Select **Clock/Info**.
3. Select **Clock/Wallpaper Type**, then open the **Wallpaper** tab.
 - ▶ The screen changes to the wallpaper list.
4. Select a wallpaper that you want to delete.
 - ▶ The preview is displayed on the left side on the screen.
 - ▶ The pop-up menu appears on the screen.
5. Select **Delete**.
 - ▶ A confirmation message appears on the screen.
6. Select **Yes** to delete completely.
 - ▶ The display will return to the wallpaper list.

Wallpaper Setup

From the pop-up menu, select **Preview** to see a preview at full-size screen.



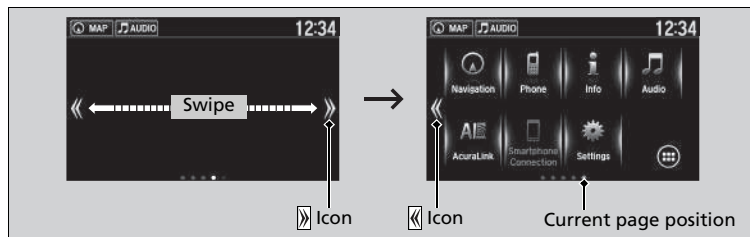
To go back to the previous screen, select **OK**, or select .

When the file size is large, it takes a while to be previewed.

To delete all wallpapers you add, select **Delete All**, then **Yes**.

Home Screen

■ To move to the next screen



Selecting or , or swiping the screen left or right changes to the next screen.

Home Screen



The home screen has 5 pages (fixed). You cannot add any more pages.

Select to go directly back to the first page of the home screen from any page.

Continued

■ To use apps or widgets



1. Select .
2. Select  (app list) icon.
▶ The **Apps** screen appears.
3. Select the app or widget you want to use.

Pre-installed app list:

- **Browser:** Displays the web browser utilized by smartphone and Wi-Fi connection.
- **Calculator:** Displays Calculator.
- **Downloads:** Displays the data downloaded from the web browser and so on.
- **Install USB:** Installs the driver for the USB flash drive.
- **Search:** Displays various retrieval screen.
- **Settings:** Displays the Android setting screen.

☒ To use apps or widgets

Select and hold a selected app or widget to add that app's or widget's shortcut on the home screen.

Pre-installed apps may not start up normally. If this occurs, you need to reset the system.

☒ **Defaulting All the Settings** P. 270


If you perform **Factory Data Reset**, it may reset all the settings to their factory default.

☒ **Defaulting All the Settings** P. 270

In case those apps still do not startup normally even after **Factory Data Reset**, contact an authorized Acura NSX dealer.

There is a possibility that a browser is shut down in the situation of the use. In that situation, the screen will return to before the browser startup.

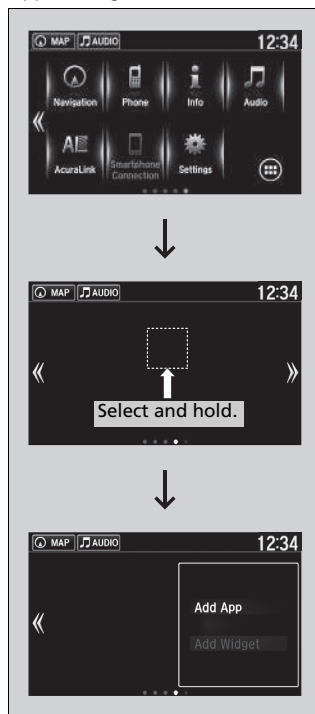
You can delete user installed apps by the following procedure.



1. Select .
2. Select **Settings**.
3. Select **System**.
4. Select the **Others** tab.
5. Select **Detail Information**.
6. Select **Apps**.
7. Select an app that you want to delete.
8. Select **Delete**.

Pre-installed apps cannot be deleted.

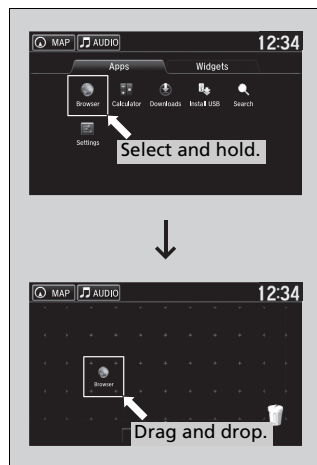
■ To add app or widget icons on the home screen

App or widget icons can be added on the home screen.



1. Select .
2. Select .
3. Select and hold empty space on the home screen.
▶ The pop-up menu appears on the screen.
4. Select **Add App** or **Add Widget**.
▶ The **Apps/Widgets** screen appears.

Continued



5. Select and hold an app or widget icon you want to add.

▶ The screen switches to the customization screen.

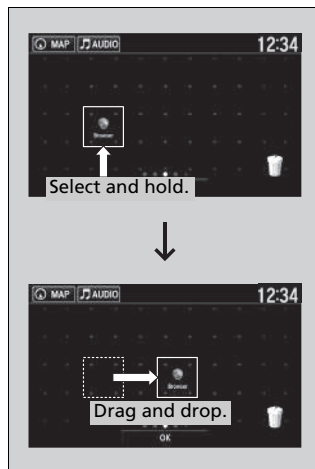
6. Drag and drop the icon to where you want it to be.

7. Select **OK**.

▶ The screen will return to the home screen.


■ To move icons on the home screen

You can change location on the home screen.



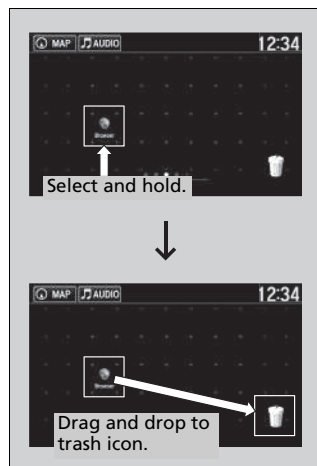
1. Select and hold an icon.
 - ▶ The screen switches to the customization screen.
2. Drag and drop the icon to where you want it to be.
3. Select **OK**.
 - ▶ The screen will return to the home screen.

☒ To move icons on the home screen

You can also move the **Phone**, **Info**, **Audio**, **Settings**, **Navigation***, **AcuraLink***, **Smartphone Connection**, and  (app list) icons in the same manner.


■ To remove icons from the home screen

You can delete the icons on the home screen.



1. Select and hold an icon.
 - ▶ The screen switches to the customization screen.
2. Drag and drop the icon you want to remove to the trash icon.
 - ▶ The icon is removed from the home screen.
3. Select **OK**.
 - ▶ The screen will return to the home screen.


⌘ To remove icons from the home screen

You cannot delete the **Phone**, **Info**, **Audio**, **Settings**, **Navigation***, **AcuraLink***, **Smartphone Connection**, and  (app list) icons.

Apps or widgets will not be deleted by deleting the icon on the home screen.

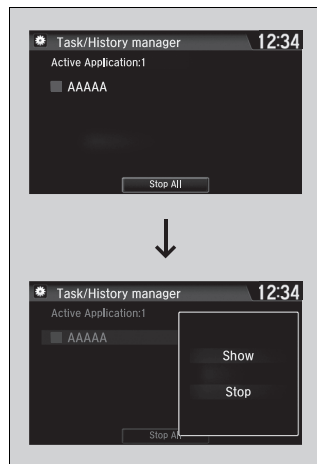
Status Area




1. Swipe the upper area of the screen.
▶ The status area appears.
2. Select an item to see the details.
3. Select **BACK** or swipe up the  icon to close the area.

Closing Apps

You can close specific apps running in the background on the system.



1. Select and hold .
2. Select an app you want to close.
3. Select **Stop**.
 - ▶ The display will return to the app list.

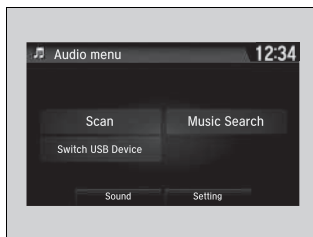
Closing Apps



If you have a number of apps running in the background and something goes wrong with the audio system, some of those apps may not work properly. If this happens, close all the apps and re-launch the app/apps that you want to use.

To close all apps on the system, select **Stop All**, then **Yes**.

You cannot close the Garmin® apps.

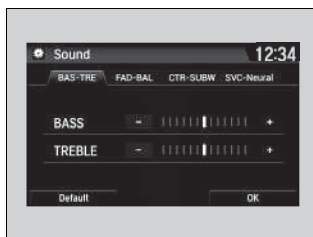
Adjusting the Sound



1. Select .
2. Select **Audio**.
3. Select .
4. Select **Sound**.

Select a tab from the following choices:


- **BAS-TRE:** Bass, Treble
- **FAD-BAL:** Fader, Balance
- **CTR*-SUBW:** Center*, Subwoofer
- **SVC-Neural*:** Speed Volume Compensation, DTS Neural Surround™*



Adjusting the Sound

The SVC has four modes: **Off**, **Low**, **Mid**, and **High**. SVC adjusts the volume level based on the vehicle speed. As you go faster, audio volume increases. As you slow down, audio volume decreases.

You can also adjust the sound the following procedure.

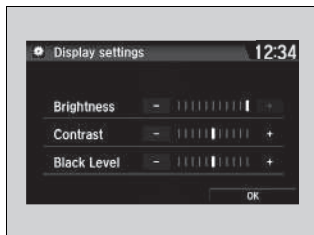
1. Select .
2. Select **Settings**.
3. Select **Audio**.
4. Select **Sound**.


* Not available on all models

Display Setup

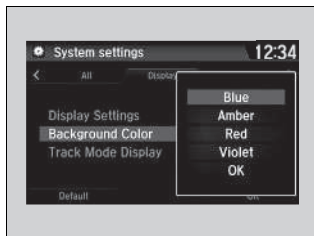
You can change the brightness or color theme of the audio/information screen.


Changing the Screen Brightness



1. Select .
2. Select **Settings**.
3. Select **System**.
4. Select the **Display** tab.
5. Select **Display Settings**.
6. Select the setting you want.
7. Select **OK**.

Changing the Screen's Color Theme



1. Select .
2. Select **Settings**.
3. Select **System**.
4. Select the **Display** tab.
5. Select **Background Color**.
6. Select the setting you want.
7. Select **OK**.

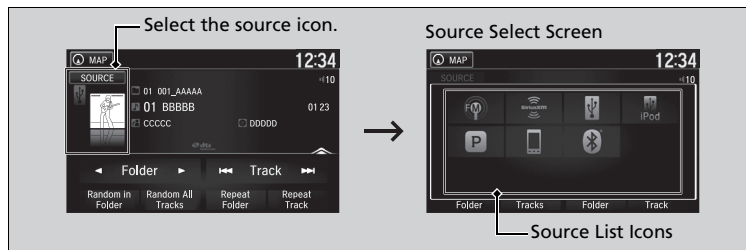
✕ Changing the Screen Brightness

You can change the **Contrast** and **Black Level** settings in the same manner.

✕ Changing the Screen's Color Theme

When the vehicle is in **SPORT+** or **TRACK** mode, the background color of the screen automatically changes to red.

Selecting an Audio Source



Select the current source icon, then select an icon on the source list to switch the audio source.

Limitations for Manual Operation

Certain manual functions are disabled or inoperable while the vehicle is in motion. You cannot select a grayed-out option until the vehicle is stopped.

Selecting an Audio Source

If you startup pre-installed audio apps, **Audio Apps** is displayed on the lower right of the screen. These pre-installed apps cannot be displayed on the source select screen. You can startup those audio apps from **Audio Apps**.

Pandora® is available only in the U.S.

Limitations for Manual Operation

When the vehicle is in **TRACK** mode, the following screen is displayed and the audio system becomes inoperable. To return to the normal screen, touch any part of the audio/information screen. You can turn the limitation on and off.

▶ **Customized Features** P. 248

