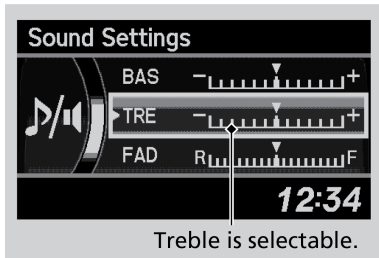


■ Adjusting the Sound

Adjusting the Sound - Models with One Display

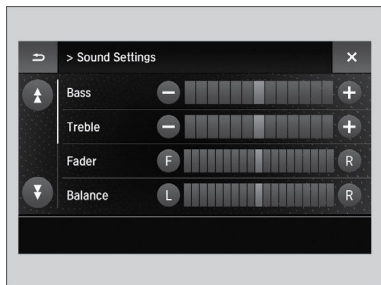
Press the SETUP button, and rotate the selector knob to select Sound Settings. Rotate the selector knob to scroll through the following choices:

- Bass
- Treble
- Fader
- Balance
- Speed-sensitive Volume Compensation



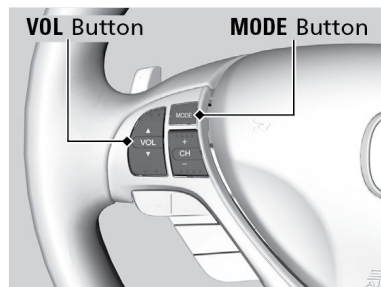
Adjusting the Sound - Models with Two Displays

1. Select Audio Menu, then select Sound Settings.
2. Select the setting you want to adjust: Bass, Treble, Fader, Balance, Center^{*1}, Subwoofer, SVC (Speed-sensitive Volume Compensation) or DTS Neural Surround^{*1}.
3. Use +, - or other icons to adjust the setting.



Audio Remote Controls

You can operate certain functions of the audio system using the steering wheel controls.



Volume Button (Up/Down Arrows): Press to adjust the volume.

MODE Button: Press to cycle through the available audio modes.

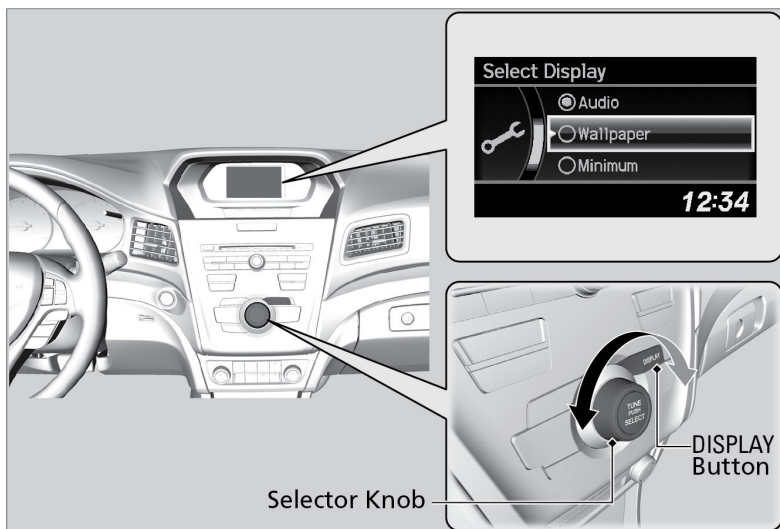
**1 - If equipped*

Audio/Information Screen

Displays each mode status and wallpaper. From this screen, you can go to various setup options.

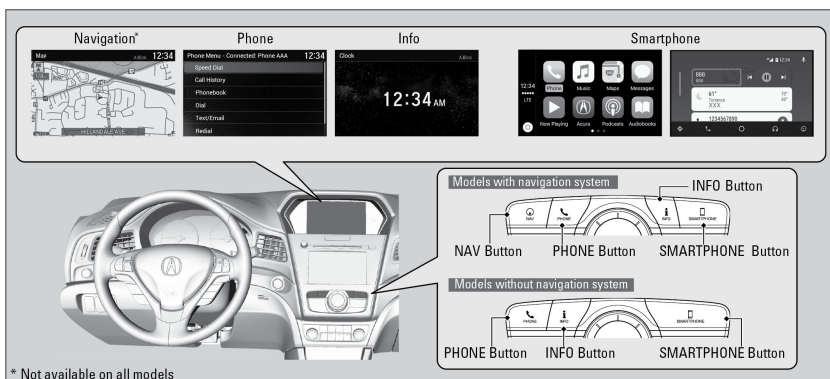
■ Switching the Display

Models with one display



1. Press the **DISPLAY** Button.
2. Rotate the selector knob and select the mode from the three display modes.

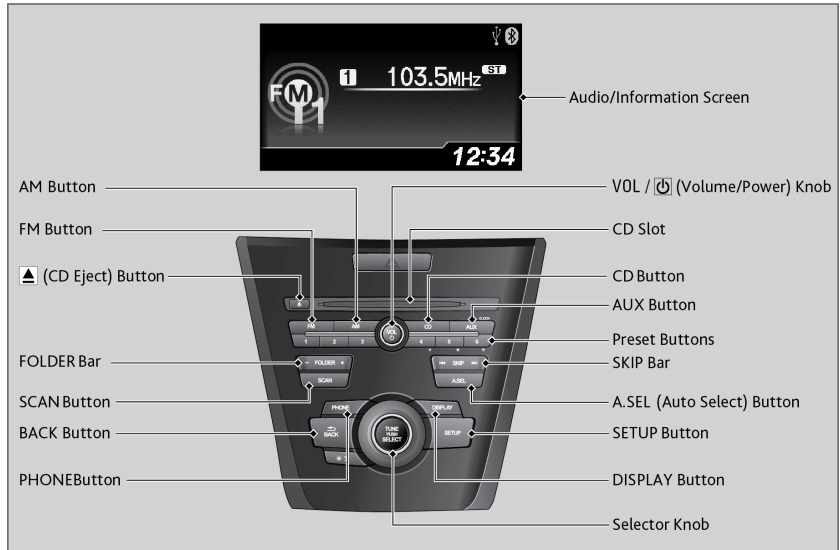
Models with two displays



1. Press the **NAV**^{*1}, **PHONE**, **INFO** and **SMARTPHONE** buttons to go to the corresponding display.

Audio System - Models with One Display

To use the audio system function, the power mode must be in **ACCESSORY** or **ON**.



NOTICE

Do not use CDs with adhesive labels. The label can cause the CD to jam in the unit.

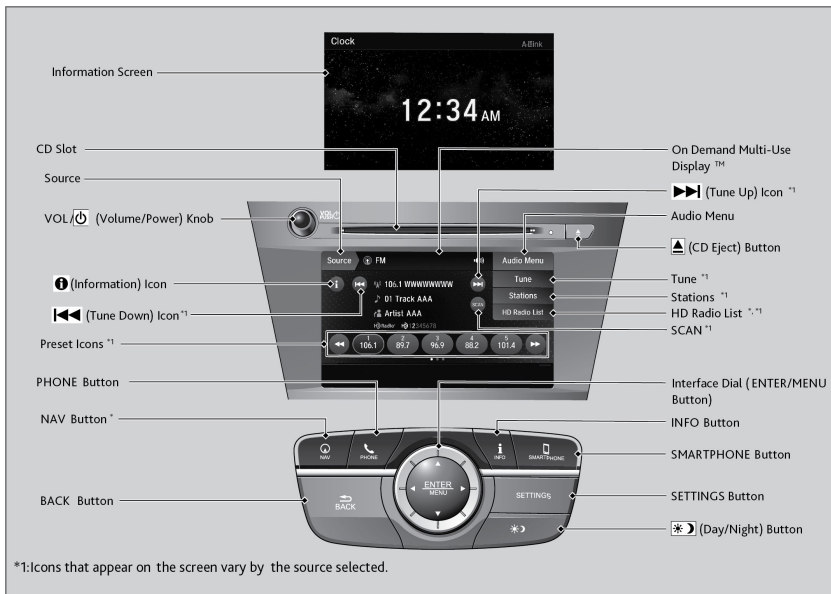
NOTICE

Do not insert a damaged CD. It may be stuck inside and damage the audio unit.

**1 - If equipped*

Audio System - Models with Two Displays

To use the audio system function, the power mode must be in ACCESSORY or ON.



NOTICE

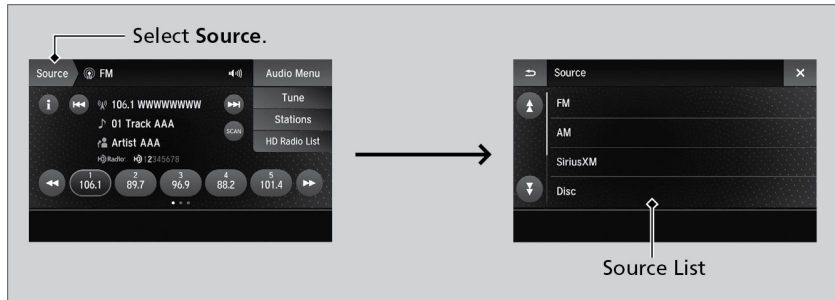
Do not use CDs with adhesive labels. The label can cause the CD to jam in the unit.

NOTICE

Do not insert a damaged CD. It may be stuck inside and damage the audio unit.

On Demand Multi-Use Display™

Use the On Demand Multi-Use Display™ to operate the audio system.

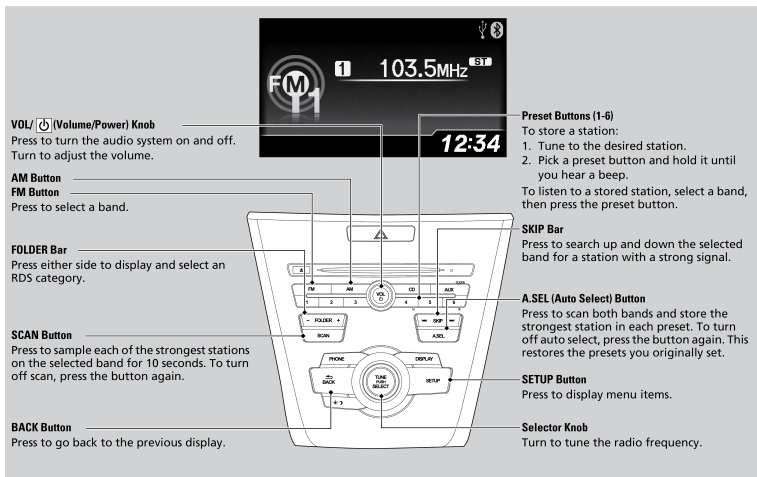


AM/FM Radio

The ST indicator appears on the display indicating stereo FM broadcasts. Stereo reproduction in AM is not available.

■ AM/FM Radio

Models with One Display



Models with Two Displays

