

NAVIGATION

Learn how to enter a destination and operate the navigation system*1.

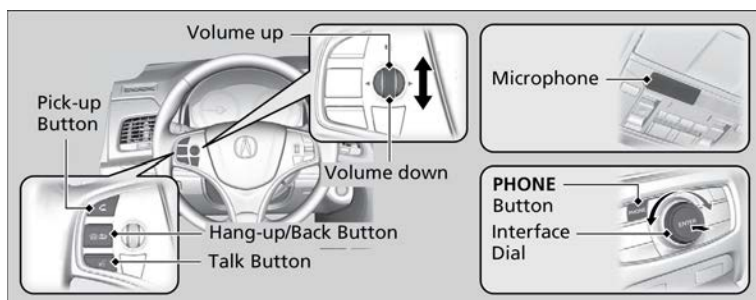
Basic Navigation Operation

A real-time navigation uses GPS and a map database to show your current location and help guide you to a desired destination. You can operate the system using voice commands or the system controls.

To reduce the potential of driver distraction, certain manual functions may be inoperable or grayed out while the vehicle is moving. Voice commands are always available.

■ Steering Wheel Controls

Use the steering wheel controls to give voice commands.



■ Talk Button Tips

The system recognizes only the commands in the Voice Command Index, see Voice Portal Commands.

- When using the Talk button, wait for a beep before saying a command.
- To bypass the system prompts, simply press the Talk button again to say your command.
- Speak in a clear, natural voice.
- Reduce all background noise.
- Adjust the dashboard vents away from the microphone in the ceiling.
- Close the windows and moonroof*1.

■ System Guidance Volume

*1 - If equipped

1. Select the ENTER button on the map.
2. Select Guidance Volume.
3. Adjust the voice prompt volume.



Navigation Display and Controls

Touch icons on the screen to enter information and make selections.

System Controls

Audio/Information Screen

(Power) Button

Volume Knob

- 1 NAV Button
- 2 BACK Button
- 3 (Display Mode) Button
- 4 MENU Button
- 5 SETTINGS Button
- 6 Interface Dial/ENTER Button



7 Microphone



- 8 (Pick-Up) Button
- 9 (Hang-Up/Back) Button
- 1a (Talk) Button

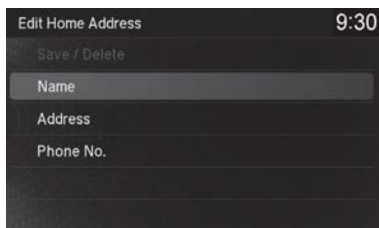
Entering Your Destination

Use several methods to enter a destination.

Home Address

Store your home address in the system so you can easily route to it.

1. Press the **SETTINGS** button.
2. Select **Navi Settings**, then **Personal Info**.
3. Select **Edit Go Home**.
4. Edit the name, address, and phone number the same way as an address in the address book.
5. Select **OK**.



■ Street Address

1. Select the **MENU** button.
2. Select **Address**.
3. Enter an address to use as the destination.

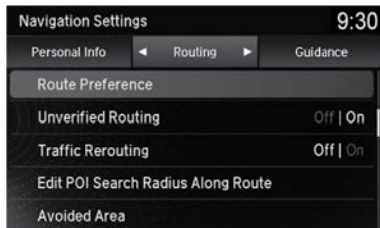


Routing

Choose various settings that determine the navigation system functionality during route calculation.

1. Select the **SETTINGS** button, then **Navigation Settings**.
2. Select **Routing**.
3. Select an item.

The following items are available:



- **Default:** Restores the factory default settings.
- **Route Preference:** Changes the route preferences (calculating method).
- **Unverified Routing:** Sets whether you use the route guidance in unverified areas.
- **Traffic Rerouting:** Sets whether you use automatic recalculation based on traffic information.
- **Edit POI Search Radius Along Route:** Sets the distance from the route to find waypoints.
- **Avoided Area:** Specifies areas to avoid when calculating a route.

■ Map Legend



⚠ WARNING

Using the navigation system while driving can take your attention away from the road, causing a crash in which you could be seriously injured or killed.

Operate system controls only when the conditions permit you to safely do so.

■ AcuraLink Real Time Traffic™*13*16

Displays continuously updated information and recalculates your route in response to traffic flow, incidents or road closures. Traffic information is only available in certain areas.



*13 - US models only, if equipped
 *16 - Requires an AcuraLink® subscription