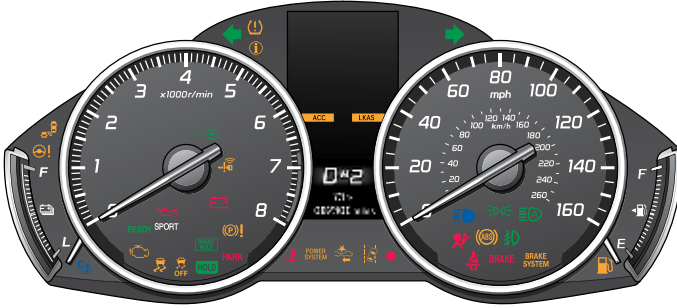


INSTRUMENT PANEL

Learn about the indicators, gauges, and displays related to driving the vehicle.



Indicators briefly appear with each engine start and then go out. Red and amber indicators are most critical. Blue and green indicators are used for general information.

Malfunction Indicators

These are the most critical indicators. If they come on and stay lit while driving or at any other time, there may be a problem. See your dealer if necessary.



Brake system

- Brake fluid is low.
- There is a problem with the brake system.

Press the brake pedal lightly to check pedal pressure. If normal, check the brake fluid level when you stop. If abnormal, take immediate action. If necessary, downshift the transmission to slow the vehicle using regenerative braking. Have your vehicle repaired immediately.



Low oil pressure

Engine oil pressure is low. Stop in a safe place. Open the hood and check the oil level, and add oil if necessary. If the indicator does not turn off, have your vehicle repaired immediately.



Malfunction indicator lamp (check engine light)

- The emissions control system may have a problem.
- (Blinks) A misfire in the engine's cylinders is detected. Stop in a safe place, and turn off the vehicle for 10 minutes or more.



Charging system

The 12-volt battery is not charging. Turn all electrical items off, but do not turn the vehicle off to prevent further battery discharge. Have your vehicle repaired immediately.



ABS (Anti-lock Brake System)

There is a problem with the anti-lock brake system. Your vehicle still has normal braking ability, but no anti-lock function.

**Supplemental Restraint System (SRS)**

There is a problem with one of the airbag systems or seat belt tensioners.

**Electric Power Steering (EPS)**

There is a problem with the electric power steering system. Stop in a safe place and restart the vehicle.

**Tire Pressure Monitoring System (TPMS)**

(Blinks and stays on) There is a problem with the tire pressure monitoring system, or a spare tire* is installed.

**Keyless Access system**

There is a problem with the keyless access system.

**Vehicle Stability Assist (VSA) system**

There is a problem with the VSA system or hill start assist system.

**Brake system**

There is a problem with one of the braking systems. Avoid high speeds and sudden braking. Your vehicle still has normal braking ability.

**Blind Spot Information (BSI)**

There is a problem with the system or the sensor is blocked.

**Adaptive Cruise Control (ACC) with Low Speed Follow**

There is a problem with the system, or the radar sensor is blocked.

**Lane Keeping Assist System (LKAS)**

There is a problem with the system, or the camera is blocked.

**Collision Mitigation Braking System (CMBS)**

There is a problem with the system, the system is turned off, the temperature is too high, or the camera is blocked.

**Road Departure Mitigation (RDM)**

There is a problem with the system, the temperature is too high, or the camera is blocked.

**Electric parking brake system**

There is a problem with the electric parking brake system. Stop in a safe place and avoid using the parking brake.



Canada

Electric parking brake

(Blinks) There is a problem with the electric parking brake system.

**High temperature**

Blinks when the engine coolant temperature goes up, and stays on if the temperature continues to rise. Drive slowly or pull over to prevent overheating.



Low temperature

The engine coolant temperature is low. If the indicator stays on, there may be a problem with the temperature sensors.



Power system

There is a problem with the electric vehicle system. Have your vehicle checked by a dealer immediately.



Condition Indicators

These indicators may require you to perform an action.



Electric parking brake

Release the parking brake before driving. You will hear a beep if you drive with it not fully released.



Seat belt reminder

Make sure seat belts are fastened for you and all passengers. The indicator blinks and beeps sound continuously if you or your front passenger has not fastened your seat belts when you begin driving. If the indicator remains on after seat belts are fastened, see your dealer.



Low fuel

- Refuel as soon as possible.
- If the indicator blinks, there is a problem with the fuel gauge. See your dealer.



Low tire pressure

Stop in a safe place, check tire pressures, and inflate tire(s) if necessary.



System message

When a condition or malfunction indicator comes on, a message also appears on the multi-information display. Check the display for more information.



Immobilizer

Your remote transmitter cannot be recognized by the vehicle. If the indicator blinks, you may not be able to start the engine. Turn the vehicle off, and then on again. If it continues to blink, there may be a problem with the system. See your dealer.

READY READY

The vehicle is ready to drive.

On/Off Indicators

These indicators remind you when an item is on or off.



VSA off



BSI off



VSA engaged (blinks)



ACC on



Turn signals/hazards on



LKAS on



Exterior lights on



SPORT mode on



High beams on



Automatic brake hold on



Fog lights on



Automatic brake hold activated



CMBS™ off



Auto high beam on



Security system alarm set

Gauges

These gauges include real-time information about your driving.

Tachometer

Speedometer

High voltage battery charge level

Fuel gauge

