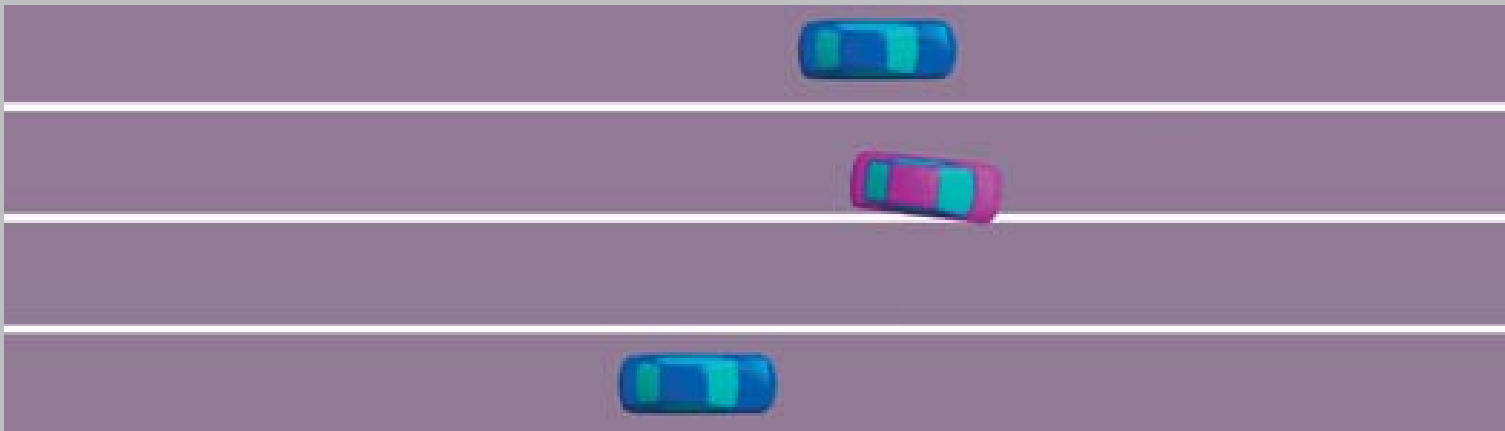


LANE KEEPING ASSIST SYSTEM (LKAS)

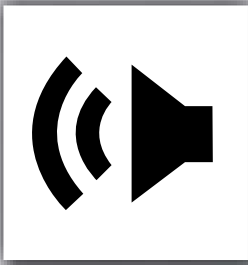
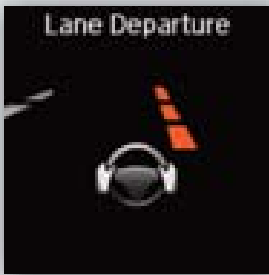
Alerts you if your vehicle begins to move out of a detected lane and helps with steering operation. Available with Advance Package.

How It Works

A camera mounted between the windshield and the rearview mirror determines if your vehicle begins to move away from the center of a detected lane while driving between 45–90 mph.



If you cross a detected lane line without using your turn signal, a message appears on the MID and a beep sounds. Steering torque is applied to keep your vehicle in the middle of the lane.



LKAS may not activate under certain conditions. See your Owner's Manual for more information.

Turning LKAS On or Off



1. Press MAIN. LKAS appears in the MID.



2. Press the LKAS button. Lane outlines appear in the MID. Dotted lane lines turn solid when the system operates.

Press MAIN or the LKAS button to turn the system off.

