

Multi-View Rear Camera

For added convenience, the area behind your vehicle is displayed to help you navigate while backing up.

How It Works

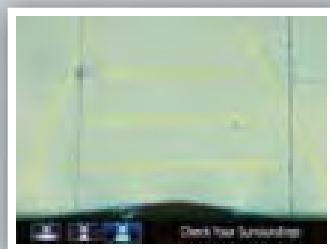
- When you select Reverse (R), a real-time image of the area behind your vehicle is shown in the display, along with helpful parking guidelines.
- The display turns off when Reverse is not selected.
- Press the interface dial to toggle between views.



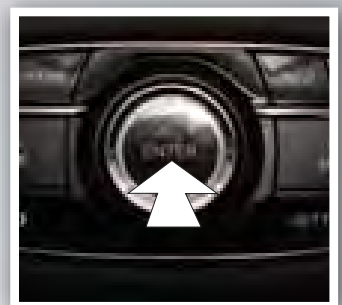
Wide (default)



Normal



Top down



Changing Settings

Turn the guidelines on or off.



1. Press **SETTINGS**. Use the interface dial to make and enter selections.
2. Select **Camera Settings**.
3. Select one of the options.
Fixed Guidelines: Guidelines appear when you shift into Reverse. Select **On** or **Off**.
Dynamic Guidelines: Guidelines move as you turn the steering wheel. Select **On** or **Off**.
4. Press **BACK** to exit the menu.