

Tire Pressure Monitoring System

Alerts you when one or more of your tires have significantly low pressure.

How It Works



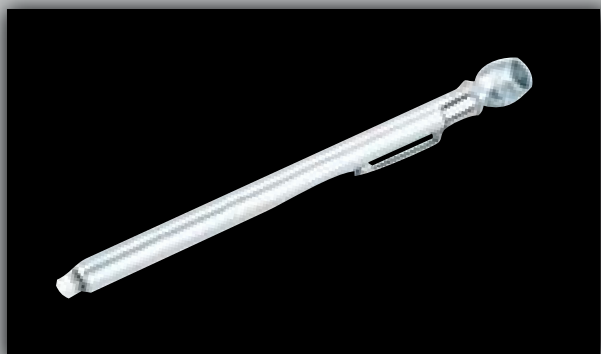
If the tire pressure drops significantly below recommended levels:

- The low tire pressure indicator comes on.
- A "CHECK TIRE PRESSURE" message appears on the MID.
- If a "CHECK TPMS SYSTEM" message appears, there may be a problem with the system. See your dealer.



What to Do

1. Visually inspect the tires for damage.
2. Use a tire air pressure gauge to check which tire(s) have low pressure.



3. Inflate the tire(s), if necessary, to the recommended pressures listed on the label on the driver's doorjamb.

