

## Customizing Settings Using the MID

Six groups of settings can be programmed using the MID\*: Adaptive Cruise Control (ACC) Setup (if equipped), Meter Setup, Position Setup, Keyless Access Setup (if equipped), Lighting Setup, and Door/Window Setup.

### ◆ Modifying the Auto Door Unlock Setting

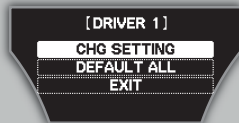
As the default setting, only the driver's door unlocks when you shift to Park. Follow the steps below to set all doors to unlock when you shift to Park:



Press the Info button to toggle to the "Keyless Memory Settings" display, then **press** SEL/RESET to activate the menu.



1. Select "CHG SETTING."



2. Select "DOOR/WINDOW SETUP."



3. Select "AUTO DOOR UNLOCK."



4. Select "SHIFT TO P."



5. Select "ALL DOORS."



6. Once the setting has been saved, select "EXIT."



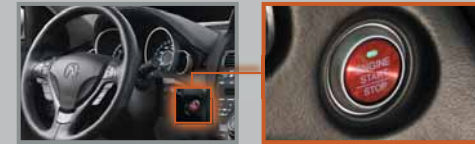
\* See Customized Settings in your owner's manual for other programmable settings.

## KEYLESS MEMORY SETTINGS

Each remote (labeled 1 or 2 on the back) activates its own set of programmable audio, climate, driving position memory, and customized settings (MID).

### Checkpoint

1. Verify that you are using the correct remote by turning the vehicle on.



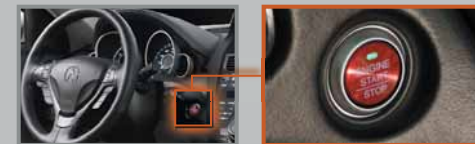
2. Check the MID:

- If you have the correct remote, the driver ID that first appears on the MID will match the ID number on the back of your remote. **Go** to step 3.



- If the numbers do not match, follow these simple instructions:

- **Turn** the vehicle off.



- **Press** the unlock button on your remote.



- **Turn** the vehicle on again and **check** the MID. The driver ID that first appears on the MID should now match the number on the back of your remote.



3. Once you have the correct remote, you can begin to program your Keyless Memory Settings.

Tech model shown

## Customizing Settings

Some examples on how to program vehicle settings.

### ◆ Storing Audio and Climate Control Settings

1. Turn the vehicle on.
3. Set your preferred climate control settings (fan speed, temperature, etc.).



2. Store your desired stations on the preset buttons and adjust your preferred audio sound levels (BASS, TREBLE, etc.).
4. Once you turn the car off, your preferred settings are saved and activated by the corresponding remote (1 or 2).



### ◆ Driving Position Memory System (DPMS)

1. Turn the ignition switch to ON (II). Shift into Park (P).
3. Press and hold the SET button until you hear a beep, then release.



2. Adjust your preferred seat, steering wheel, and outside mirror settings.
4. Press and hold the memory button # corresponding to the remote (1 or 2) you are using until you hear two beeps.



**Note:** Each group of settings is activated by the corresponding remote transmitter (1 or 2) when it's used to unlock the driver's door. When activated, each item begins to adjust before you enter the vehicle.

\* See Customized Settings in your owner's manual for other programmable settings.