

NAVIGATION (Tech/Advance Package)

Real-time navigation system uses GPS and a map database to show your current location and help guide you to a desired destination.

Entering a Destination

Using Voice Control

Press and release the Talk button before you give a command.

1. Say "Display menu" and "Address."



4. Say the entire street address number. For example, "1-2-3-4."



2. Say "Street" followed by the street name. Do not include the direction (N, S, E, W) or type (St., Ave., Blvd., etc.).



5. If the street address is in more than one city, a list of city names appears. Say the number next to the city you want.



3. A list of street names appears. Say the number next to the street you want.



6. The system calculates the route and displays the "Calculate route to" screen. Say "OK" to set the route.



* You can also use the Interface Dial to complete this procedure.

Using "Find Nearest" Command

Try these simple steps to find a nearby point of interest, such as a gas station, movie theater, restaurant, etc.

Press and release the Talk button before you give a command.

1. Say "Find nearest ATM."



3. Say the number you want to select.



2. A list of the nearest ATMs in your area is displayed by shortest distance to destination.



4. The system calculates the route and displays the "Calculate route to" screen. Say "OK" to set the route.



* You can also use the Interface Dial to complete this procedure.

Map Screen Legend

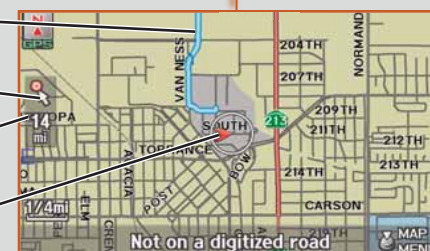


Calculated Route

Direction of destination

Distance to go

Current vehicle location



ACURALINK REAL-TIME TRAFFIC™* (if equipped)

Provides continuously updated info, including traffic speed, incidents, and construction in major metro areas.

Press and release the Talk button before you give a command.

◆ Displaying Traffic Information

Say "Display traffic" to view highway flow of data.



Incident Icons:



NOTE: Traffic flow and incident icons can only be displayed on map scales of 5 miles (8 km) or less.

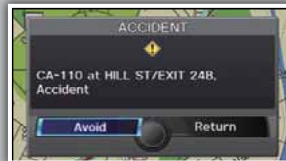
◆ Traffic Rerouting

The system can automatically provide detours around traffic incidents (if Traffic Rerouting is ON in Setup), or you can calculate a new route manually.

1. Say "Display traffic incidents" to view a list of incidents in your area.



3. Say the number of the incident you wish to avoid, and say "Avoid."



2. Say "On route" to view specific incidents on your route.



4. The system notifies you that your route has been changed.



* Subscription-based service through Sirius XM Radio® (free 90-day trial upon vehicle purchase)
 ** You can also display this information manually using the Interface Dial from the Map menu.

ACURALINK REAL-TIME WEATHER™* (if equipped)

Provides current weather conditions, warnings, and forecasts in major metro areas.

Press and release the Talk button before you give a command.

◆ Displaying Weather Icons

Say "Display weather" to view weather icons for each city.



Weather Icons:



NOTE: Weather icons are available on all map scales.

◆ Displaying Weather Information

Say "Information," then "Weather information" for the following options:

Weather Forecast

Say "Weather forecast" to view a 1-day or 3-day forecast of your current position or city vicinity.



Radar Map

Say "Radar map" to view color-coded rain or snow systems.



Weather Warning List

Say "Warning list sorted by distance" to view a list of all U.S. weather warnings by distance.



Weather Warning Map

Say "Warning map" to view color-coded severe weather systems.



* Subscription-based service through Sirius XM Radio® (free 90-day trial upon vehicle purchase)
 ** You can also display this information manually using the Interface Dial from the Map menu.

ACURALINK MESSAGES (Tech/Advance Package)

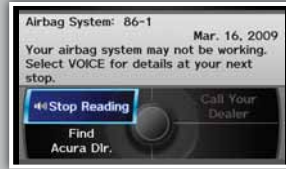
Acura periodically sends you messages on vehicle features, recall and safety information, maintenance reminders, and diagnostic information.

Viewing New Messages

- When you receive a new message, an envelope icon appears on the map screen.



- Say the number of the message you want to hear.



- Say "Messages," and a list of messages appears.

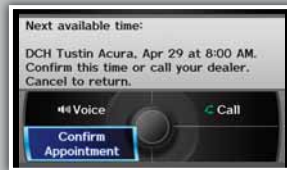
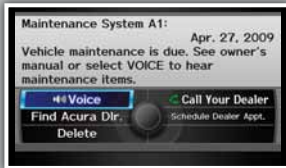


Scheduling a Dealer Appointment

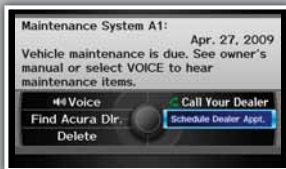
To use this feature, you must register at My Acura (www.myacura.com), and make sure your Bluetooth-compatible phone is paired and correctly set up (see **Pairing Your Phone**).

- Using the Interface Dial, **open** a maintenance or product update message.
- The system searches for the next available appointment at your dealer. **Select** "Confirm Appointment" if you are satisfied with the date.

NOTE: If you are not satisfied with the available date, use the Call option to call your dealer directly.



- Select** "Schedule Dealer Appt."



- Select** "OK" to set the appointment.



BLUETOOTH® HANDSFREELINK® (Base Model)

Allows you to place and receive phone calls through your vehicle's audio system. Visit www.acura.com/handsfreelink to check if your phone is Bluetooth-compatible.

Pairing Your Phone

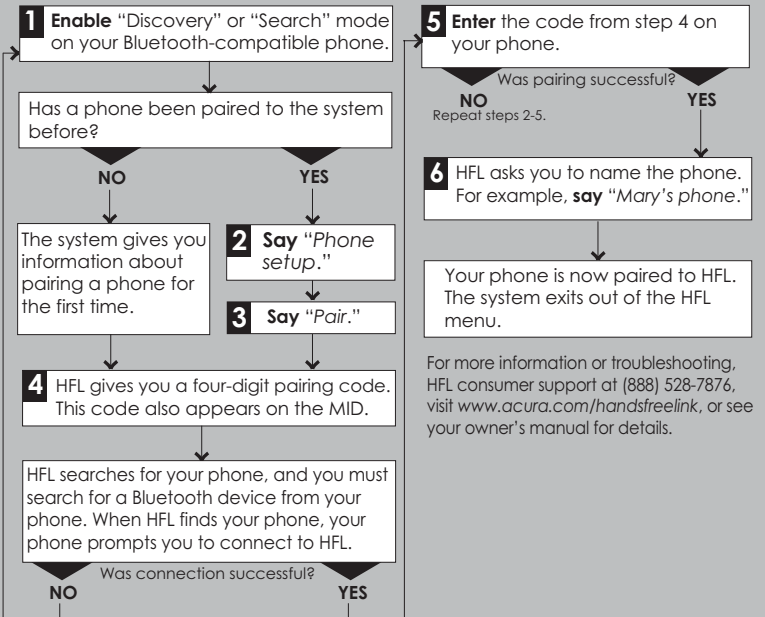


HFL Talk button: Give HFL commands and answer incoming calls.

HFL Back button: Cancel a command and end or decline a call.



Press and release the HFL Talk button before you give a command.



For more information or troubleshooting, HFL consumer support at (888) 528-7876, visit www.acura.com/handsfreelink, or see your owner's manual for details.